
EPSON DOT MATRIX LQ-2190

The Epson LQ-2190 is a 24-pin wide-format printer and like its predecessor – the LQ-2180 – it is a fast, flexible, cost-effective and highly reliable printing solution which combines large print volumes with high letter quality – ideal for applications such as invoices, delivery notes, inventory listings or even labels.

Reliability

With MTBF (mean time between failure) of 20,000 power-on hours and a print head life of 400 million strokes per wire, this extremely robust printer is suitable for medium and large print volumes. Both features guarantee uninterrupted operation and less maintenance, in turn enhancing your productivity and reducing your total cost of ownership.

Speed

Its high print speed of up to 480 cps (10 cpi) makes it an ideal solution for high volume applications. For those who demand even higher productivity especially for complex fonts like Arabic, the new unique Epson Print Speed Enhancer accelerates the print speed even further.

Flexibility

Flexible paper management allows insertion at the front, rear and bottom and dual tractor units allow you to load two sizes of paper at the same time, ready for use. The ability to print on 6-part stationery is useful for multi-part forms. With the addition of USB interface, the LQ-2190 also provides flexible stand-alone connectivity.

High ribbon yield

At 15 million characters per ribbon, the LQ-2190 also offers a very long ribbon life. The benefits are long ribbon replacement intervals, low running costs and lower total cost of ownership.

KEY FEATURES

- Robust and durable 24-pin wide-format impact printer
- Very high print speed up to 480 cps (10 cpi)
- Equipped with "Print Speed Enhancer" for even faster printing
- Highly reliable with an MTBF of 20,000 power-on hours
- Reliable print head life of 400 million strokes/wire
- Long-lasting ribbon, approx. 15 million characters
- Copy capability of 1 original + 5 copies
- Two tractor units as standard
- Versatile front, bottom and rear paper paths
- USB and parallel interfaces
- Low power consumption

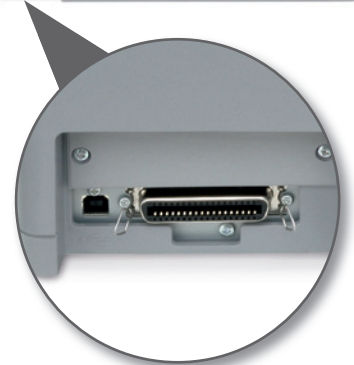
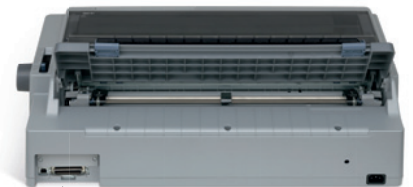
OPTIONS

- Additional pull tractor unit
- Roll paper holder
- Network print server, serial interface



TECHNICAL SPECIFICATIONS

Model name	LQ-2190 (available in 220V and 240V versions)		
Printing method	Serial impact dot matrix		
Number of pins	24 pins		
Columns	136 columns		
Print direction	Bi-directional with logic seeking		
Print speed	Mode	10 cpi	12 cpi
	High Speed Draft (HSD)	480 cps	576 cps
	Draft	360 cps	432 cps
	LQ	120 cps	144 cps
Special feature	Print Speed Enhancer for fast printing of bit image data		
Paper/media	Cut sheet (single sheet, multi part), Continuous paper (single and multi part), Roll paper, Envelope, Card, Label (cut sheet and fan fold)		
Paper feeding	Manual Insertion (Front or rear in, top out), Push Tractor (Front or rear in, top out), Pull Tractor (Front or rear or bottom in, top out)		
Fonts	9 LQ & 1 Draft Bitmap and 4 scalable typefaces, 8 Barcode fonts		
Input buffer	128 Kbytes		
Interfaces	Standard: Bi-directional parallel interface (IEEE-1284 nibble mode supported) Standard: USB 2.0 (Full Speed) Option: Type B I/F level 2 Option: Serial interface		
Copy capability	1 original + 5 copies		
Consumables	Black fabric ribbon		
Ribbon yield	15 million characters		
Reliability	MTBF: 20,000 POH (25% Duty) Print head life: 400 million strokes/wire		
Emulations	ESC/P2 & IBM PPDS		
Noise level	54 dB		
Voltage range	AC 220 to 240 V		
Power consumption	Approx. 46 W (ISO/IEC10561 Letter pattern), approx. 3 W in sleep mode, 0 W in powered off mode, Energy Star Compliant		
Dimensions	639 x 402 x 256 mm		
Weight	13.0 kg		
Printer Driver/Utility	OS: Microsoft® Windows® 2000/XP/Vista/7 EPSON Status Monitor 3 (Microsoft® Windows® 2000/XP/Vista/7) EPSON Printer Setting (Microsoft® Windows® 2000/XP/Vista/7)		
Options	Pull tractor unit, Roll paper holder, Serial interface, Network print server		
Warranty	Standard: 12 months return to base Optional: Cover plus 36 month return to base		
Order code	LQ-2190 220V version	C11CA92001	
	LQ-2190 240V version	C11CA92001A0	
	Black fabric ribbon	C13S015086	
	Pull tractor unit	C12C800322	
	Roll paper holder	C12C811141	
	Serial interface	C12C824432	
	Epson network print server	C12C824352	



With auto switching USB and parallel interfaces, the LQ-2190 provides flexible stand-alone connectivity.

