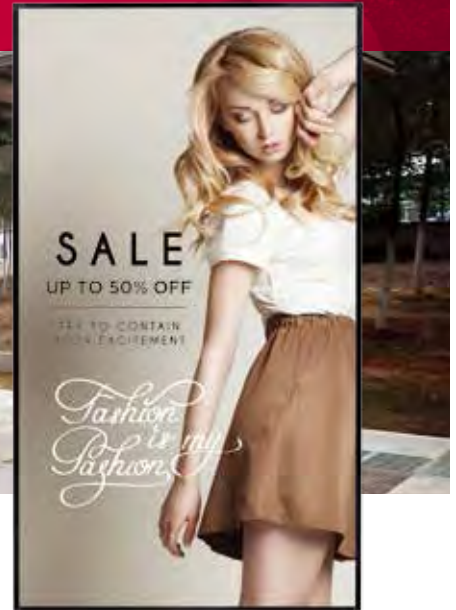


Advanced Reliability with Low Power Consumption

Open Frame XF2B



High Brightness XF2B is a new outdoor signage, that can be utilized as a digital banner on outdoor kiosks near stations or buildings. It guarantees stability when exposed to external high temperatures and effectively reduces costs with a space-efficient design and low power consumption.

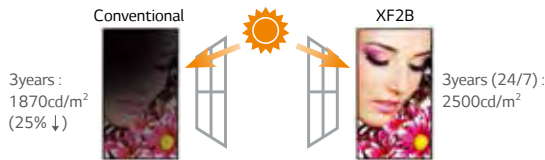
Key Features

Product Reliability



High brightness Reliability

Over time, the brightness decreases depending on operating time. However, the LG XF2B sustains its brightness for a long time.



Dust & Humidity Protection

The conformal coating enhances circuit board reliability by protecting it from dust, iron shavings, humidity and other harsh conditions.



Cost Effectiveness



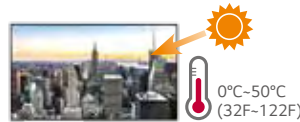
Low Power Consumption by M+

It has excellent energy-efficiency and cost-savings with the M+ panel, which decreases power consumption by 37% compared to the RGB panel.



Cost Effective Housing

Its high reliability under high operating temperatures reduces the material costs of the enclosure.

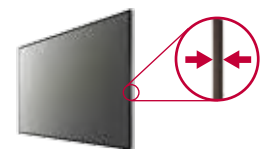


Space Management Efficiency



Slimmer Depth

The slimmer depth saves space for installation and makes the enclosure design slimmer.



Easy Maintenance



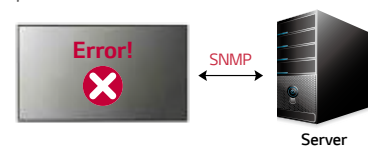
Real-Time Remote Monitoring

When an alarm occurs, an e-mail notification is sent using SuperSign C or SI SW through the SNMP Protocol. In case of malfunctions or errors, real-time remote care is available.



Saving System Log Files

Supports log file backup for fault clarification when the enclosure fails. It is convenient for the user to check the log file history for proof when enclosure errors occur.



Advanced Reliability with Low Power Consumption



Screen Sizes

55", 49"



XF2B

- Brightness : 2,500cd/m² (Typ)
- Life Time: 50,000hrs
- Bezel : 55" : 9.9mm (L/R), 12mm (T/B)
49" : 6.5mm (L/R), 9mm (T/B)
- Depth : 55" : 106mm, 49" : 105mm
- Operating Temp. : 0 ~ 50°C (w/o Direct Sunlight),
0 ~ 40°C (Direct Sunlight)
- Interface : HDMI / DVI / RJ45 / IR / Daisy-Chain (DP, RS232C)

Specifications

	55XF2B	49XF2B	
PANEL	Screen Size	55" Class (54.64" measured diagonal)	49" Class (48.50" measured diagonal)
	Panel Technology	IPS	IPS
	Aspect Ratio	16 : 9	16 : 9
	Native Resolution	1,920 x 1,080 (FHD)	1,920 x 1,080 (FHD)
	Brightness	2,750cd/m ² (Max), 2,250cd/m ² (Min), 2,500cd/m ² (Typ.)	2,750cd/m ² (Max), 2,250cd/m ² (Min), 2,500cd/m ² (Typ.)
	Contrast Ratio	1,000:1	1,000:1
	Dynamic CR	500,000:1	500,000:1
	Viewing Angle (H x V)	178 x 178	178 x 178
	Surface Treatment	Hard coating (2H), Anti-Reflection Treatment of the Front Polarizer (Reflectance 1.5%)	Hard coating(2H), Anti-glare treatment of the front polarizer (Reflectance < 2%)
	Life Time	50,000 Hours	50,000 Hours
Orientation	Portrait & Landscape	Portrait & Landscape	
CONNECTIVITY	Input	HDMI(2), DP, DVI-D, Audio, USB, IR Receiver, Pixel Sensor	HDMI(2), DP, DVI-D, Audio, USB, IR Receiver, Pixel Sensor
	Output	DP, External Speaker Out (L/R)	DP, External Speaker Out (L/R)
	External Control	RS232C (In/Out), RJ45	RS232C (In/Out), RJ45
PHYSICAL SPECIFICATION	Bezel Width	9.9mm (L/R), 12mm (T/B)	6.5mm (L/R), 9mm (T/B)
	Monitor Dimension (W x H x D)	1235.4 x 709.4 x 106mm	1092.7 x 626.4 x 105mm
	Weight (Head)	27kg	22kg
	Carton Dimensions (W x H x D)	1336 x 241 x 810mm	1195 x 196 x 760mm
	Packed Weight	32kg	26.7kg
VESA™ Standard Mount Interface	600 x 400mm	600 x 400mm	
SPECIAL FEATURES	Temperature Sensor, Auto Brightness Sensor, Easy Brightness Control, Cooling Fan, Tilt Mode (up to 15 x 15), Local Dimming (160 Block), Fail over, System Log File Save, Smart Energy Saving, Internal Memory		
ENVIRONMENTAL CONDITIONS	Operating Temperature Range	0 ~ 50°C (w/o Direct Sunlight), 0 ~ 40°C (Direct Sunlight)	0 ~ 50°C (w/o Direct Sunlight), 0 ~ 40°C (Direct Sunlight)
	Operating Humidity Range	10 % to 80 %	10 % to 80 %
	Power Supply	100-240V~, 50/60Hz	100-240V~, 50/60Hz
POWER	Power Type	Built-In Power	Built-In Power
	Power Consumption Typ./Max	230W / 310W	190W / 250W
	Power Consumption Smart Energy Saving	100 W	85W
STANDARD (CERTIFICATION)	Safety	RU / CB scheme	RU / CB scheme
	EMC	FCC Class "A" / CE / KCC	FCC Class "A" / CE / KCC
SOFTWARE COMPATIBILITY	SuperSign-V/Lite	Yes	Yes
	SuperSign-C	Yes	Yes
ACCESSORY	Accessory	Remote Controller (2 batteries included), Power Cord, IR extension cable/PCB, HDMI Cable, Manual	
	Optional Accessory	KT-SPO ** Stand is not available	KT-SPO, AN-WF500 ** Stand is not available

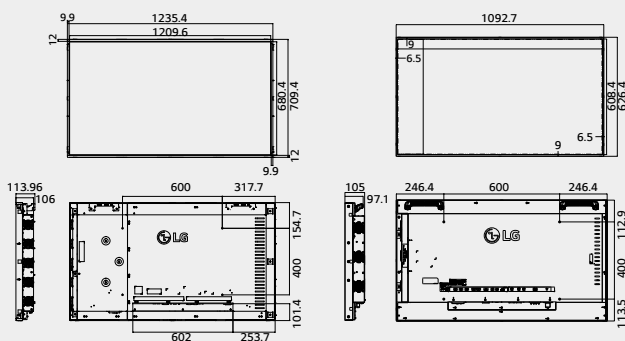
Dimension (unit : mm)

55"

1235.4 x 709.4 x 106 / 27kg

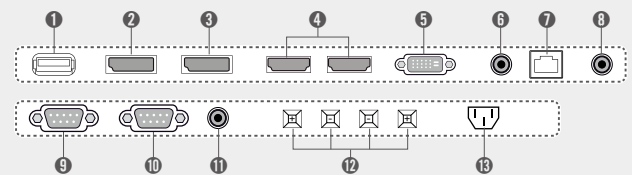
49"

1092.7 x 626.4 x 105 / 22kg



Connectivity

- 1 USB IN
- 2 DP IN
- 3 DP OUT
- 4 HDMI IN
- 5 DVI-D IN
- 6 AUDIO IN (PC)
- 7 LAN
- 8 PIXEL SENSOR
- 9 RS-232C IN
- 10 RS-232C OUT
- 11 EXT IR IN
- 12 SPEAKER OUT (8Ω)
- 13 AC IN



Download LG Commercial Display Mobile App



More info www.lgcommercial.com

YouTube youtube.com/c/LGCommercialDisplay

LG may make changes to specifications and product descriptions without notice.

Copyright © 2015 LG Electronics Inc. All rights reserved. "LG Life's Good" is a registered of LG Corp.

The names of products and brands mentioned here may be the trademarks of their respective owners.

