

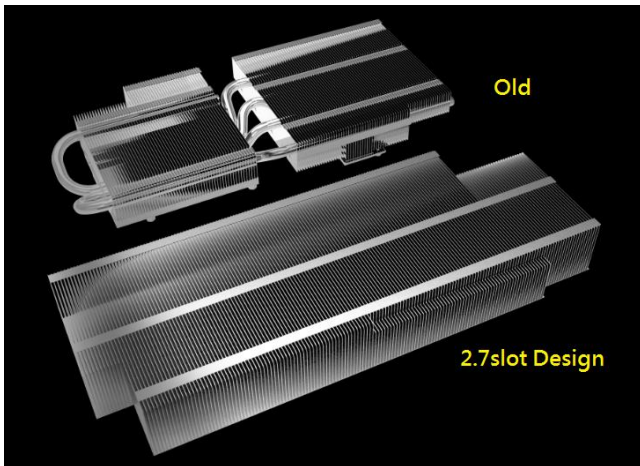
## 2X Fans, 2X Fun

### ASUS Exclusive Innovations

#### ■ 2.7 Slot Design

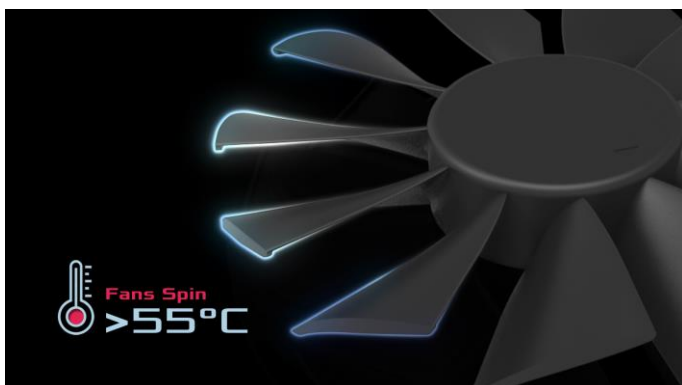
Sink your heat into this

We've increased our heatsink to 2.7 slot, and the overall surface area became 2X larger compared to last generation. Larger heatsink provided lower temperature while gaming.



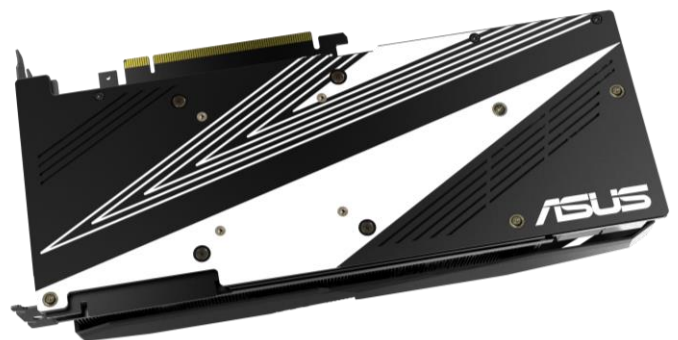
#### ■ Wing-blade 0dB Fan with IP5X Dust Resistance

Maximized airflow and prolonged longevity with a patented fan design. Also, 0dB Technology lets fans automatically stop when the GPU temperature is below 55 Celsius.



#### ■ Protective Backplate

An aluminum backplate reinforces the graphics card to prevent PCB flex and trace damage



## ASUS Features

## Graphics GPU Features

**8GB** GDDR6  
Memory

● **Gigantic 8GB GDDR6 Memory:**  
On-board memory for the best gaming experience & the best resolution

**GPU Tweak II**  
Real-time Graphics Tuning  
and Live Streaming

■ **GPU Tweak II:**  
Comprehensive GPU performance tweaking with customizable OSD, Xsplit Gamecaster, and WTFast Gaming Private Network software.

\*Free 1-year premium XSplit Gamecaster (USD 99.95 /yr).

\*Six-month WTFast premium license (USD\$53.95 )



**NVIDIA G-SYNC™**

● **NVIDIA® G-SYNC™ Technology**  
For the smoothest and fastest gaming imaginable, eliminating screen tearing and minimizing display stutter and input lag.



● **NVIDIA® Ansel:**  
Turn screenshots into art with 360, HDR, and Super-Res photos.

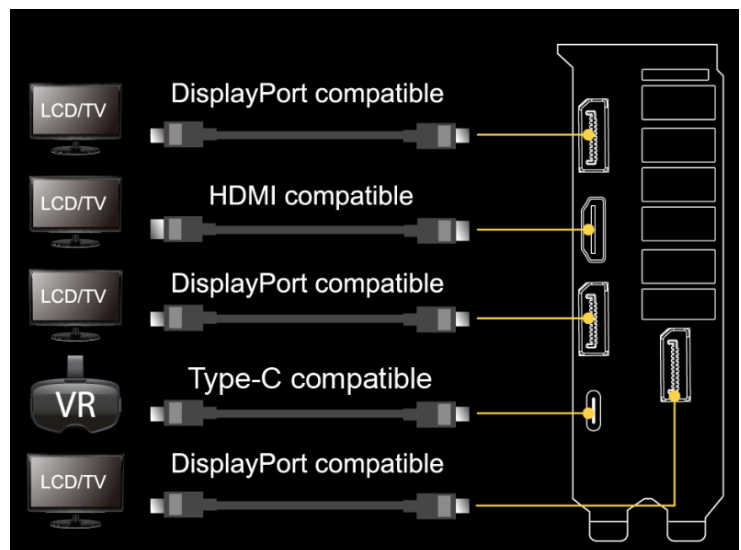


● **NVIDIA® Highlights:**  
Automatically record your best gaming moments.

**PCIe 3.0**  
2X Data Bandwidth

● **PCIe 3.0:**  
Delivers double the bandwidth per lane of PCIe Gen 2 for faster GPU – CPU communication

## I/O Specifications



## Hardware Specification

Model	DUAL-RTX2080-8G
Graphics Engine	NVIDIA® GeForce® RTX 2080
CUDA cores	2944
OpenGL	OpenGL® 4.5
Engine Clock	OC mode : 1740 MHz (Boost Clock) 1515 MHz (Base Clock) Gaming mode : 1710 MHz (Boost Clock) 1515 MHz (Base Clock)
Memory Interface	256-bit
Video Memory	8GB GDDR6
Memory Clock	14000 MHz
Power Connector	1x 8 pin 1x 6 pin
I/O	1x Native HDMI 2.0b 3x Native DisplayPort 1.4 1x USB Type-C
HDCP compliant	HDCP 2.2
Digital Max Resolution	7680 x 4320
Maximum Display Support	4
SLI / Crossfire Support	Yes
Recommended PSU	650W
Bus Standard	PCIe 3.0
Dimension	The card size is 10.53 x 4.47 x 2.28 inches 26.8 x 11.4 x 5.8 cm
Software Bundled	ASUS GPU Tweak II & Driver
Slot	2.7 slot
Note	Specifications are subject to change without notice. PCB color and bundled software versions are change without notice. Brand and product names mentioned are trademarks of their respective company.

