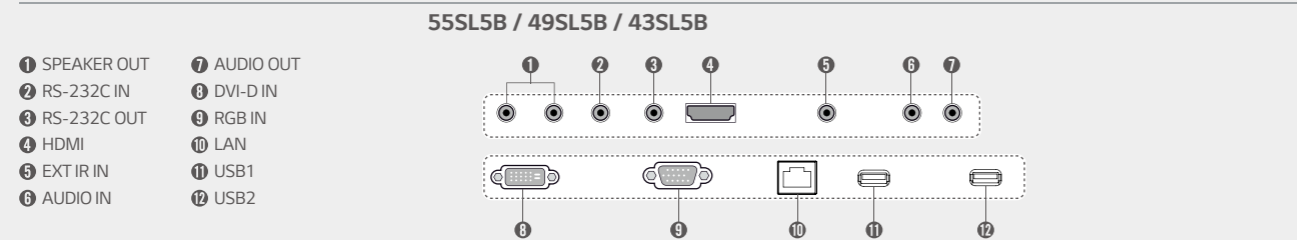


Specifications

SL5B Series	55SL5B	49SL5B	43SL5B	
PANEL	Screen Size	55	49	43
	Panel Technology		IPS	
	Aspect Ratio		16 : 9	
	Native Resolution		1,920 x 1,080 (FHD)	
	Brightness		450 cd/m ²	
	Contrast Ratio		1,100:1	
	Dynamic CR		500,000 : 1	
	Viewing Angle(H x V)		178 x 178	
	Surface Treatment	Hard coating (3H), Anti-Glare Treatment of the Front Polarizer (Haze 1%(Typ.))		
	Guaranteed Operating Hour	18 Hours		
CONNECTIVITY	Orientation	Portrait & Landscape		
	Input	HDMI, DVI, RGB, Audio, USB		
	Output	Audio, External Speaker Out		
PHYSICAL SPECIFICATION	External Control	RS232C, RJ45, IR receiver		
	Bezel Color	Black		
	Bezel Width	11.9mm (T/R/L), 18mm (B)	11.9mm (T/R/L), 18mm (B)	11.9mm (T/R/L), 18mm (B)
	Monitor Dimensions (WxHxD)	1,238 x 714.9 x 38.6mm	1,102.2 x 638.5 x 38.6mm	969.6 x 563.9 x 38.6mm
	Weight (Head)	17.3kg	14.1kg	9.8kg
	Weight (Head + Stand)	20.6kg	17.4kg	12.3kg
	Monitor with Optional Stand & Speaker Dimensions (WxHxD)	1,238 x 773.4 x 219.6mm	1,102.2 x 696.8 x 219.6mm	969.6 x 622.2 x 193mm
	Weight (Head+Stand+Speaker)	21.1kg	17.9kg	12.8kg
	Carton Dimensions (W x H x D)	1,330 x 813 x 151mm	1,197 x 760 x 134mm	1,052 x 650 x 123mm
	Packed Weight	21.5kg	17.1kg	12.4kg
SPECIAL FEATURES	VESA™ Standard Mount Interface	300 x 300		
		USB Content Scheduling, Conformal Coating, SNMP Support, Wi-Fi Ready (Dongle), Power Management modes (Sustain Aspect Ratio/Stand-by Screen, etc.), No Signal Image setting, Enhanced ISM (Image Sticking Minimization) Mode, Holiday Schedule/Local Time Auto Setting, Fail-over (USB, RGB, DVI, HDMI), Wake on LAN		
ENVIRONMENTAL CONDITIONS	Operating Temperature range	0 °C to 40 °C	0 °C to 40 °C	0 °C to 40 °C
	Operating Humidity range	10 % to 80 %	10 % to 80 %	10 % to 80 %
POWER	Power Supply	100-240V~, 50/60Hz		
	Power Type	Built-In Power		
POWER CONSUMPTION	Typ.	90W	80W	70W
	Smart Energy Saving	80W	55W	50W
STANDARD (CERTIFICATION)	Safety	UL / cUL / CB / TUV / KC		
	EMC	FCC Class "A" / CE / KCC		
	ErP / Energy Star	Yes / Yes (Energy Star 6.0)		
MEDIA PLAYER COMPATIBILITY	OPS type compatible	No	No	No
	External Media player Attachable	Yes (MP500/MP700)	Yes (MP500/MP700)	Yes (MP500/MP700)
SOFTWARE COMPATIBILITY	SuperSign-W/Lite	Yes		
	SuperSign-C	Yes		
ACCESSORY	Basic	Basic Remote Controller (2 batteries included), Power Cord, QSG, RGB Cable, Regulation Book, Phone to RS232C Gender, IR Receiver		
	Optional	Speaker (SP-5000), Stand (ST-492T), Wall bracket (LSW350B), VESA Adapter (AM-B330S)	Speaker (SP-5000), Stand (ST-492T), Wall bracket (LSW350B), VESA Adapter (AM-B330S)	Speaker (SP-5000), Stand (ST-432T), Wall bracket (LSW230B), VESA Adapter (AM-B220S)

Connectivity



Download LG Commercial Display Mobile App



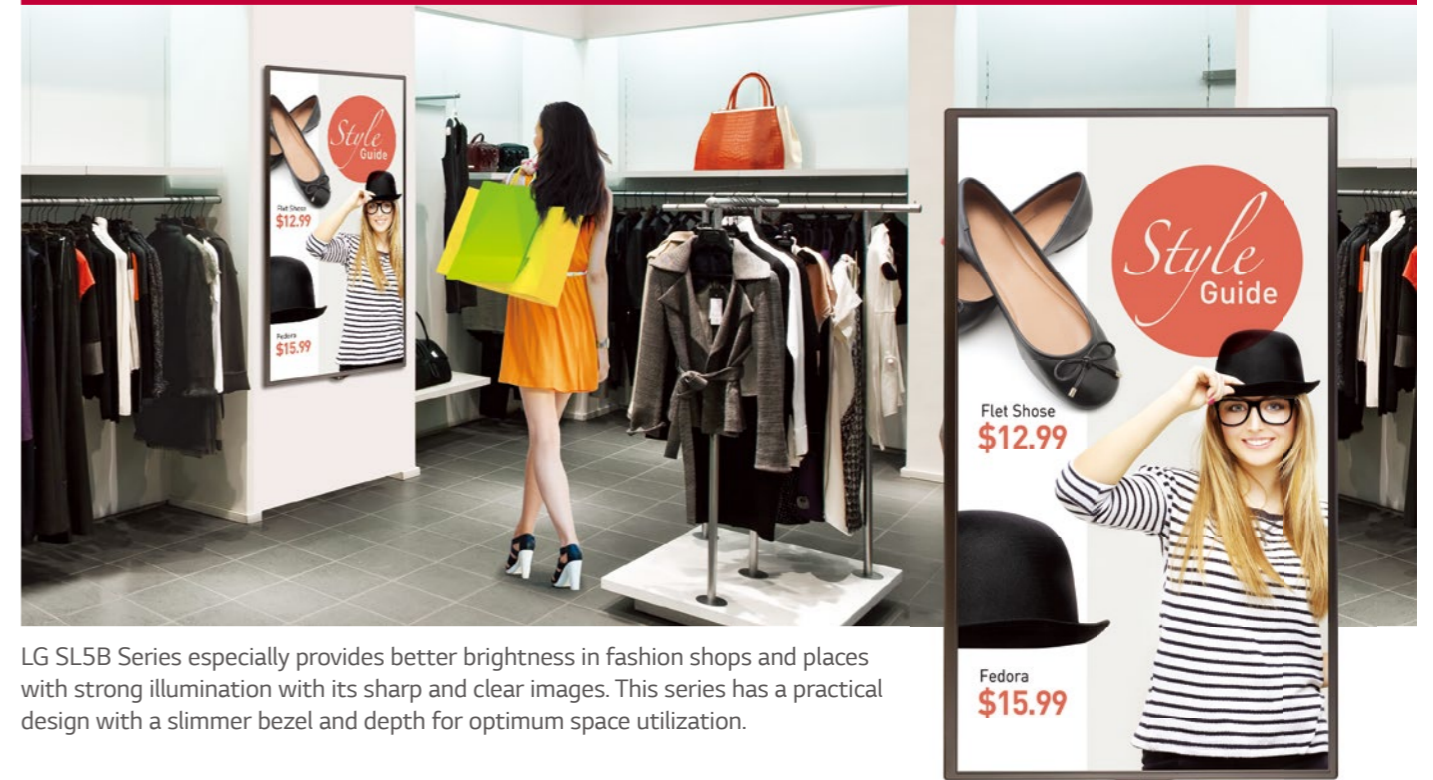
More info www.lgcommercial.com

YouTube [youtube.com/c/LGCommercialDisplay](https://www.youtube.com/c/LGCommercialDisplay)

LG may make changes to specifications and product descriptions without notice. Copyright © 2015 LG Electronics Inc. All rights reserved. "LG Life's Good" is a registered of LG Corp. The names of products and brands mentioned here may be the trademarks of their respective owners.



Display Solution to provide Superior Viewing Experience Standard Essential SL5B Series



LG SL5B Series especially provides better brightness in fashion shops and places with strong illumination with its sharp and clear images. This series has a practical design with a slimmer bezel and depth for optimum space utilization.

Key Features

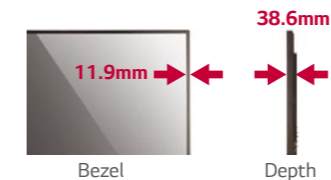
Enhanced Design Configuration



Slim

Slimmer Bezel & Depth

The thinner bezel & depth allows a perfect fit for a sleek look.



Bezel

Depth

Detachable Logo

Portrait mode allows the logo to be positioned in the desired setting.



Cable Management

The well-organized cable terminals in the back optimize available space.



USB Content Management



USB Content Scheduling

Play and schedule contents with a USB connection-no server connection required.



*Supported Content Type : Video (MPEG1/2/4, H.264), Audio(MP3, AC3, MPEG, AAC, HEAAC, LPCM), Image(JPEG, PNG, BMP)

Dust & Humidity Protection



Conformal Coating

Circuit board reliability is enhanced with conformal coating that protects against dust, iron powder, humidity and other harsh conditions.



Display Solution to provide Superior Viewing Experience

Standard Essential SL5B Series



Screen Sizes
55"/49"/43"

SL5B Series

- Brightness : 450 cd/m²
- Bezel : Top/Left/Right 11.9mm, Bottom 18mm
- Depth : 38.6mm
- Interface : HDMI/DVI/RGB/RJ45/2USB, RS232C

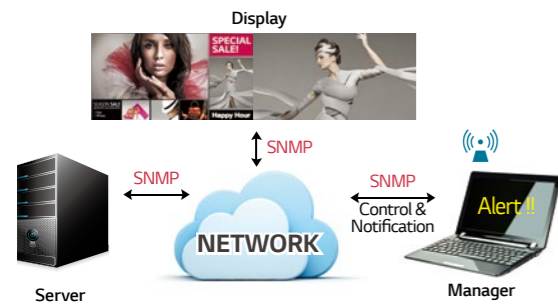


Other Features

Remote Management

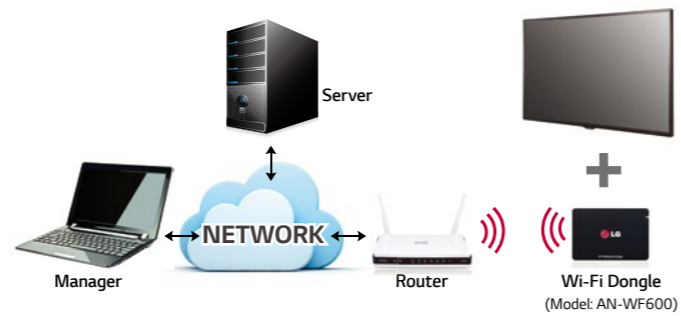
Simple Network Management Protocol

SNMP support ensures convenient network management.



Wi-Fi Support

SL5B Series support Wi-Fi USB dongle connection for convenient content distribution.



Convenient Screen Mode

Aspect Ratio Sustainability*

Sustain the same resolution and picture quality while powering on/off by receiving EDID¹⁾ through switch IC.



1) Extended Display Identification Data.
* Installation Menu > LG Digital Signage > PM Mode

Stand-by Screen*

Even without signal from the media player, the network does not turn off completely, so remote control is possible, which prevents unnecessary power usage and enables efficient management.



Scheduled Screen Wash**

Prevent residual images with the screen transition feature.

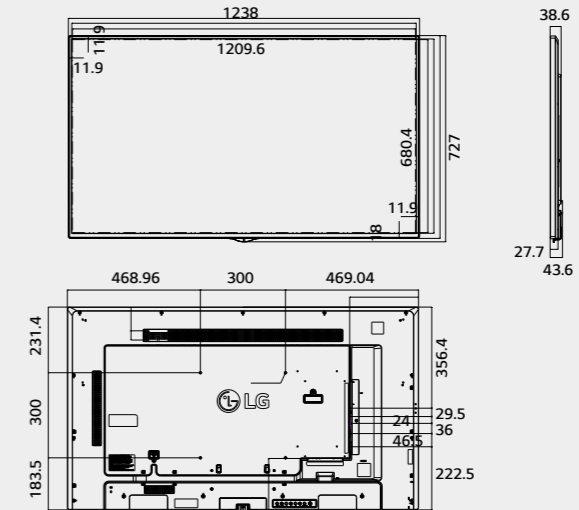


** Installation Menu > ISM Method

Dimension (unit : mm)

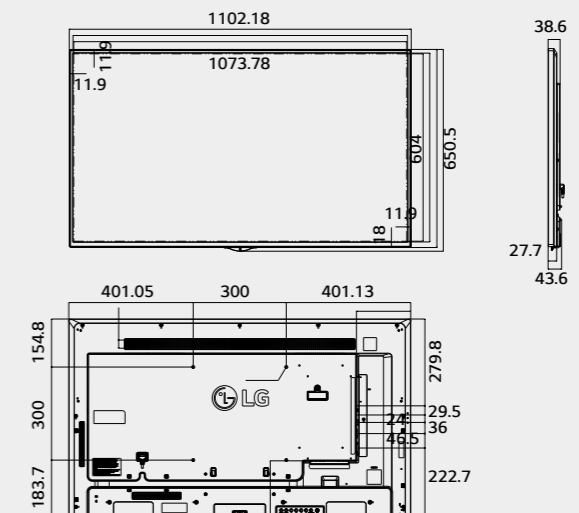
55"

1,238 x 714.9 x 38.6 /
17.3kg



49"

1,102.2 x 638.5 x 38.6 /
14.1kg



43"

969.6 x 563.9 x 38.6 /
9.8kg

