

## Federal Communications Commission (FCC) Radio Frequency Interference Statement Warning

Changes or modifications to this unit not expressly approved by the party responsible for compliance could void the user's authority to operate the equipment.

### Note

This equipment has been tested and found to comply with the limits for a Class B digital device, pursuant to Part 15 of the FCC Rules. These limits are designed to provide reasonable protection against harmful interference when the equipment is operated in a commercial environment. This equipment generates, uses, and can radiate radio frequency energy and, if not installed and used in accordance with the instruction manual, may cause harmful interference to radio communications. Operation of this equipment in a residential area is likely to cause harmful interference in which case the user will be required to correct the interference at his own expense.

### Information to the User

This equipment must be installed and used in strict accordance with the manufacturer's instructions. However, there is no guarantee that interference to radio communications will not occur in a particular commercial installation. If this equipment does cause interference, which can be determined by turning the equipment off and on, the user is encouraged to contact CognitiveTPG immediately.

CognitiveTPG is not responsible for any radio or television interference caused by unauthorized modification of this equipment or the substitution or attachment of connecting cables and equipment other than those specified by CognitiveTPG. The correction of interferences caused by such unauthorized modification, substitution or attachment will be the responsibility of the user.

In order to ensure compliance with the Product Safety, FCC and CE marking requirements, you must use the power supply, power cord, and interface cable which are sold for use with this product or which meet the following parameters:

### Power Supply

UL Listed (QQGQ), Class 2 power supply with SELV (Secondary Extra Low Voltage), non-energy hazard output, LPS (limited power source), input rated 100-240 Vac, 1.6 A, 50/60 Hz, output rated 24 Vdc, 2.5 A for 60 watt unit.

Use of this product with a power supply other than the CognitiveTPG power supply will require you to test the power supply and CognitiveTPG printer for FCC and CE mark certification.

### Communication Interface Cable

A shielded (360 degree) interface cable must be used with this product. The shield must be connected to the frame or earth ground connection or earth ground reference at EACH end of the cable.

Use of a cable other than described here will require that you test the cable with the CognitiveTPG printer and your system for FCC and CE mark certification.

### Power Cord

A UL listed, detachable power cord must be used. For applications where the power supply module may be mounted on the floor, a power cord with Type SJT marking must be used. For applications outside the US, power cords which meet the particular country's certification and application requirements should be used.

Use of a power cord other than described here may result in a violation of safety certifications which are in force in the country of use.

### Industry Canada (IC) Radio Frequency Interference Statement

This Class B digital apparatus meets all requirements of the Canadian Interference-Causing Equipment Regulations. Cet appareil numérique de la classe B respecte toutes les exigences du Règlement sur le matériel brouilleur du Canada.

### Voluntary Control Council for Interference (VCCI) Radio Frequency Interference Statement

This is a Class B product based on the standard of the voluntary Control Council for Interference by Information Technology Equipment (VCCI). If this equipment is used in a domestic environment, radio disturbance may arise. When such trouble occurs, the user may be required to take corrective actions.

### Disclaimer

Information in this document is subject to change without notice. Consult your CognitiveTPG sales representative for information that is applicable and current. CognitiveTPG reserves the right to improve products as new technology, components, software, and firmware become available.

No part of this document may be reproduced, transmitted, or translated in any form or by any means, electronic or mechanical, for any purpose without the express written permission of CognitiveTPG.

### Copyright

Copyright © 2013 by CognitiveTPG, LLC.  
950 Danby Road, Ithaca, New York 14850, USA. All rights reserved. Printed in USA. Property of CognitiveTPG, LLC.

### Trademarks

CognitiveTPG™ is a trademark of CognitiveTPG, LLC.  
Microsoft, Windows are registered Trademarks of Microsoft Corporation in the U.S.A. and/or other countries.  
Inside Out Networks, Inside Out, EPIC, and Edgeport are trademarks of Inside Out Networks.  
All other trademarks and registered trademarks are the property of their respective holders.

Website: <http://www.CognitiveTPG.com>

# Color POS A799II Two-Color Thermal Receipt Printer Setup Guide

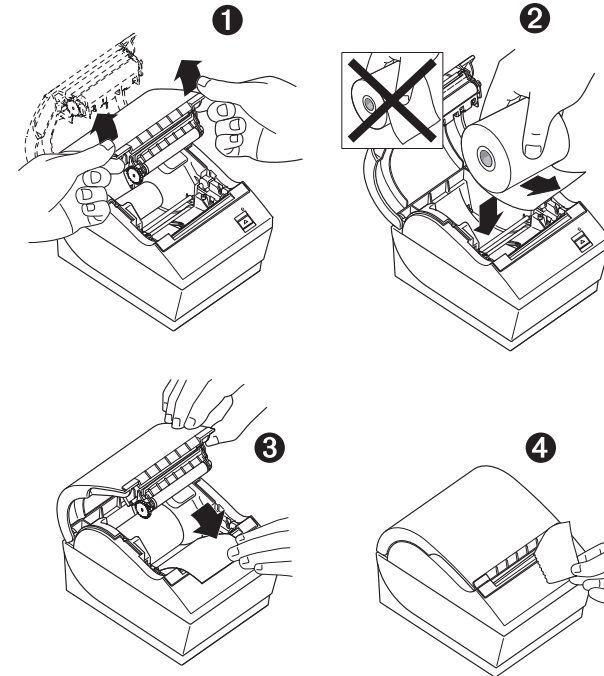
Thank you for selecting **CognitiveTPG Model A799II Two-Color Single Station Thermal POS Receipt Printer**  
**BEST PRINTER... BEST PRICE!**

You have chosen the world's most innovative thermal receipt printer. A799II features ultra-fast printing, industry-leading durability and outstanding graphics capability.

Please review this Setup Guide and follow the prompts on the installation CD. Additional information can be found in the A799II User Guide and A799 Series Programming Guide, which are included on the disk. If you have any questions, please call us at **800-732-8950** or **607-274-2500** or visit **www.CognitiveTPG.com**. Please visit the website's Warranty Registration section to register your printer and provide feedback on its quality.

## Setting up the printer (Pages referenced are from the User Guide)

- 1 Unpack the printer, saving all packing materials for future shipping or storage (page 13).
- 2 Load the roll of paper (page 14). You can change the paper type used in this printer (page 24).



Made under one or more of the following U.S. patents: 4886381, 5579043, 5613787, 5651624, 5713678, 5752779, 5789916, 5800080, 5879090, 5887999, 5975776, 6027266, 6085973, 6089450, 6129465, 6155483, 6404452, 6486902, 6504331, 5749277, 6722754, 6739773, 6784909.  
Other U.S. and international patents pending.

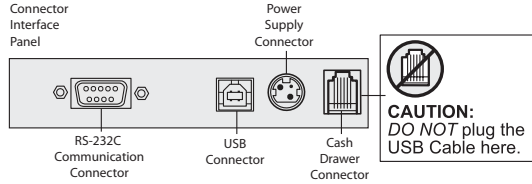
**COGNITIVE TPG**



**3** Choose a location for the printer.

**4** Connect the following cables based on your configuration, using a-d below.

When using USB (step "b" below), use caution to ensure the **USB cable is connected to the USB connector** and not into the cash drawer connector that is on the right back of the printer.

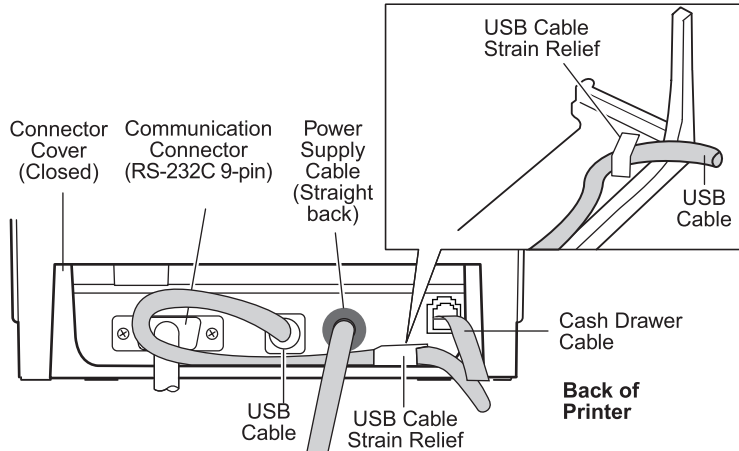


**a** Cash drawer (if your installation includes this feature, page 17).

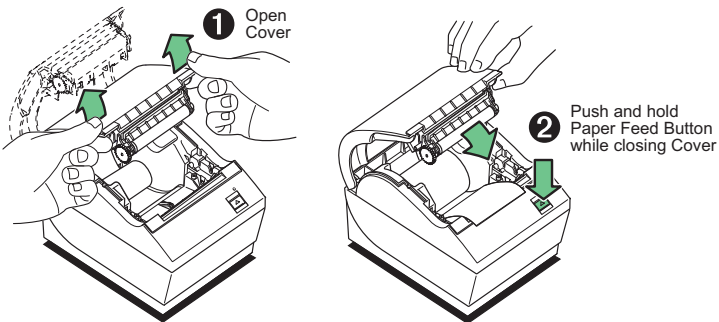
**b** 9-pin serial or USB cable (serial: page 18; USB: page 19).

**c** Connect the power cable (page 20).

**d** Route cables as shown for your setup configuration (page 21). All cables shown for routing purposes only. Do not connect USB and RS232 cables at the same time.



**5** Run a diagnostic test (page 24).



**6** Configure the printer if necessary (page 24).

\*\*\* A799II - Diagnostics Form \*\*\*

Model number : A799-780D-TD00  
 Serial number : 0000000000

Flash Firmware  
 Revision : V1.22  
 CRC : 07AE  
 P/N : 189-799A122A

H/W parameters  
 Flash Memory Size : 8 Mbytes  
 Flash Logos/Fonts : 640 kbytes  
 Flash User Storage : 0 kbytes  
 Flash Perm't Fonts : 5504 kbytes  
 Flash Journal Size : 0 kbytes  
 SRAM Size : 8192 kbytes  
 Head setting : H  
 Motor ID : 1  
 Paper Type Setting : Type 0, Monochrome  
 Color Density Adj : n/a  
 Print Density, Mono : 80%  
 Max Speed : 350 mm/sec  
 Paper Width : 80 mm  
 Max Power : Level 1  
 Knife : Enabled  
 Partial Cut : 135 steps  
 Paper Low Sensor : Enabled  
 No Paper Low Extension

Comm. Interface  
 Interface : USB  
 RX Buffer Size : 4096  
 USB Driver Type : Printer Class

Interface : RS232  
 RX Buffer Size : 4096

Parameters  
 Baud Rate : 115200  
 Data Bits : 8  
 Stop Bit : 1  
 Parity : NONE  
 Flow Control : DTR/DSR  
 Reception Errors : Ignore

Resident Code Pages : 437, 850, 852, 858  
 860, 863, 865, 866  
 1252, 862, 737, 857  
 1251, 1255, KZ-1048

\*\*\*\*\* MAIN MENU \*\*\*\*\*

- Select a sub-menu :
- EXIT -> 1 click
  - Print Current Configuration -> 2 clicks
  - Set Communication Interface -> 3 clicks
  - Set Diagnostics Modes -> 4 clicks
  - Set Emulation/Software Options -> 5 clicks
  - Set Hardware Options -> 6 clicks
  - Set Paper Type -> 7 clicks
  - Set Firmware Features -> 8 clicks

Enter code, then hold Button DOWN at least 1 second to validate

\*\*\*To Enter Printer Config Menu\*\*\*  
 Press Feed Button Within the Next Two Seconds

Current Printer tallies are printed after the Diagnostic information and will vary per printer use.

DECLARATION OF CONFORMITY

Model: A798-XXXX-XXXX  
 Model: A799-XXXX-XXXX (X = any alphanumeric character)  
 CognitiveTPG, LLC, 950 Danby Road, Ithaca, New York, 14850

This declaration of conformity is issued under the sole responsibility of the Manufacturer: CognitiveTPG, LLC

Information Technology Equipment – Thermal Printer

The object of the declaration described above is in conformity with Directive 2011/65/EU of the European Parliament and of the Council of 8 June 2011 on the restriction of the use of certain hazardous substances in electrical and electronic equipment. With the exception of models A798-XXXX-XXXX and A799-XXXX-XXXX.

**Applicable EU Directives:**  
 2004/108/EC (electromagnetic compatibility directive)  
 2006/95/EC (low voltage directive for product safety)

**Harmonized Standards:**  
 EN 55024 (1998/A1:2001/A2:2003) Information Technology Equipment Immunity Characteristics  
 EN 55022 (2006/A1:2007) EMC, Class B, Limits and Methods of Measurement of Interference Characteristics of IT Equipment  
 EN 60950-1:2006 + A1:2010 + A11:2009 + A12:2011  
 IEC 60950-1 (ed.2):am1- Product Safety Standard.

Signed for and on behalf of CognitiveTPG, LLC  
 Ithaca, NY, January 2, 2013

*Jeffrey C. Phoenix*