

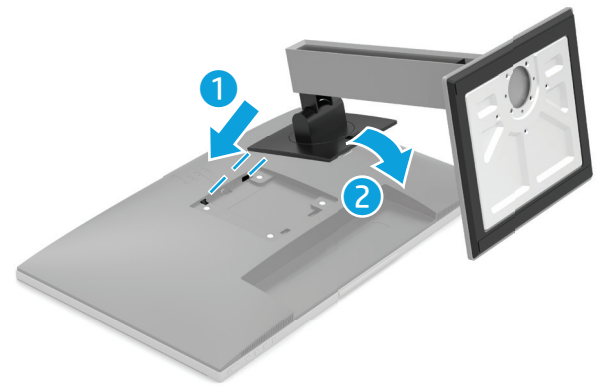
Quick Setup

Optimum Resolution

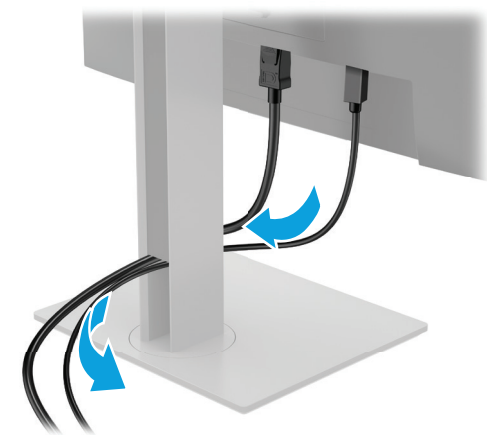
55 cm/21.5 in: 1920 × 1080 @ 60 Hz



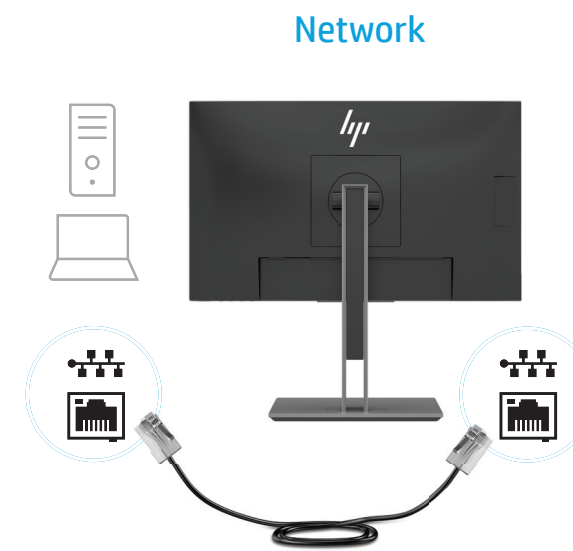
1



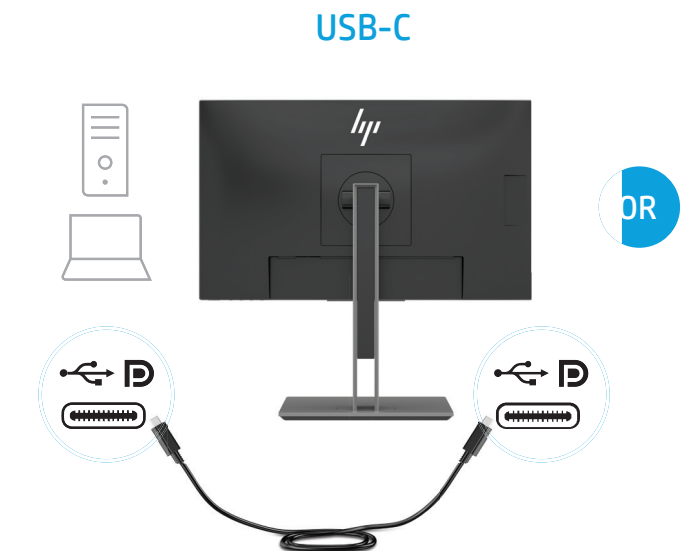
2



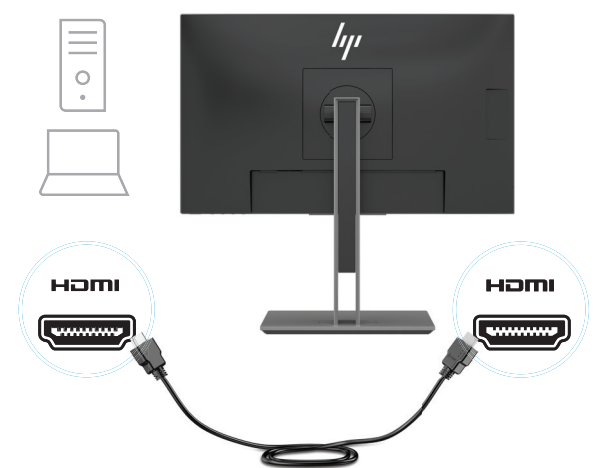
3



4

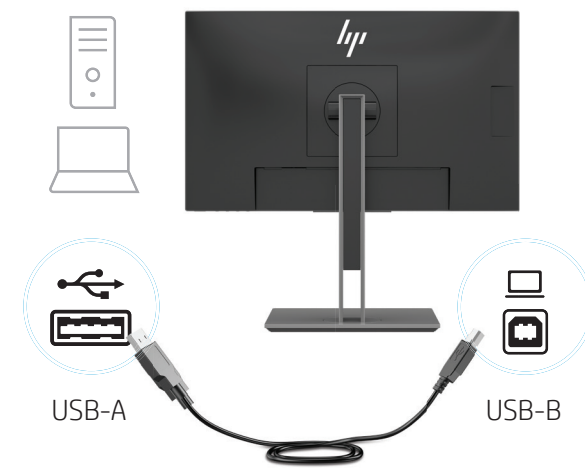


HDMI

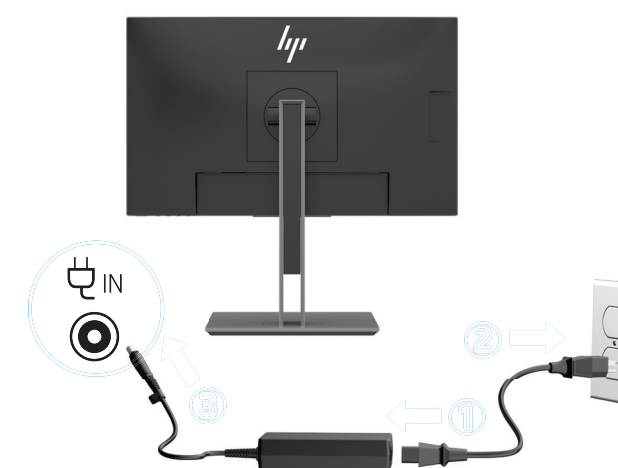


+

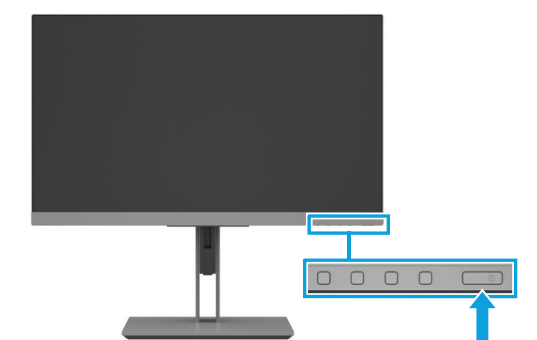
USB



5

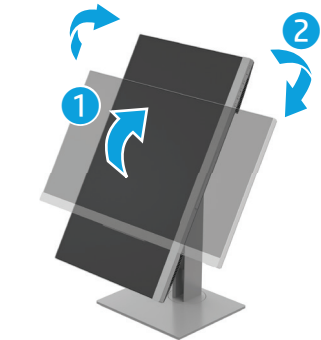
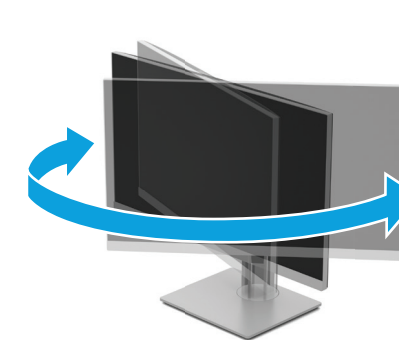
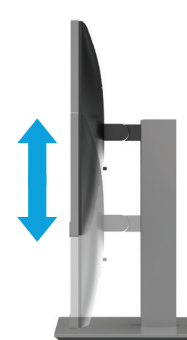
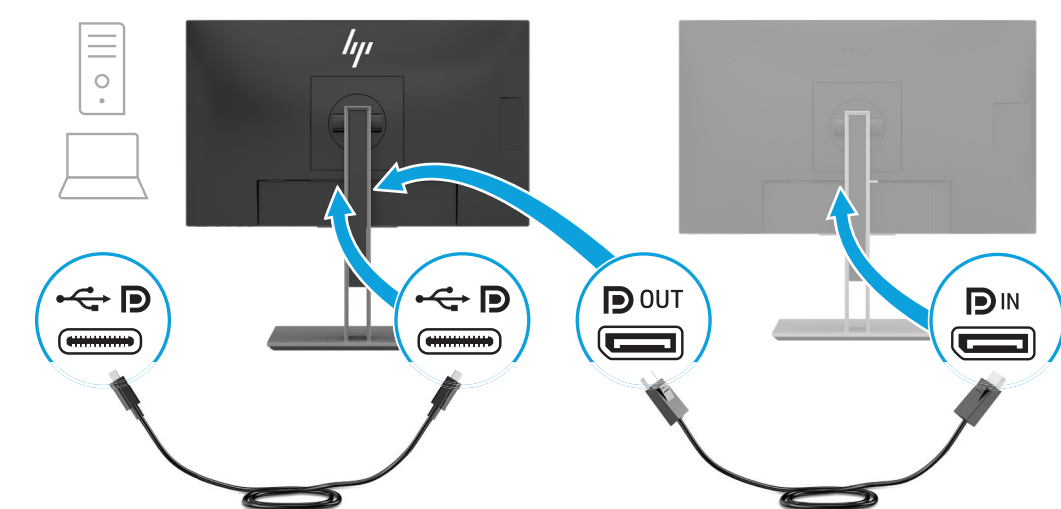


6

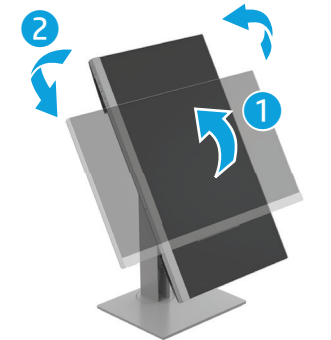


7

Daisy Chaining



OR



www.hp.com/support

© Copyright 2019 HP Development Company, L.P.
The information contained herein is subject to change without notice. The only warranties for HP products and services are set forth in the express warranty statements accompanying such products and services. Nothing herein should be construed as constituting an additional warranty. HP shall not be liable for technical or editorial errors or omissions contained herein.
First Edition: January 2019
RMN: HSD-0033-A
Printed in XXX



L50854-B21



English

WARNING: Only one host PC should be connected to either the USB Type-C or DC OUT port for power pass through. Connecting two host PCs to the monitor may result in system shutdown, loss of power, and the need to turn off and restart the monitor.

WARNING: To reduce the risk of electric shock or damage to the equipment:

- Plug the power cord into an AC outlet that is easily accessible at all times.
- Disconnect power from the monitor by unplugging the power cord from the AC outlet.
- If provided with a 3-pin attachment plug on the power cord, plug the cord into a grounded (earthed) 3-pin outlet. Do not disable the power cord grounding pin, for example, by attaching a 2-pin adapter. The grounding pin is an important safety feature.

Go to **www.hp.com/support** to locate your user guide, drivers, and software. For safety, regulatory, and environmental information, refer to the *Product Notices* provided with your product.

In some countries or regions, HP may provide the HP Limited Warranty in the box. For countries or regions where the warranty is not provided in the box, you can find it on the Web. To access an online copy or order a printed copy of your warranty, go to **http://www.hp.com/go/orderdocuments**. For products purchased in Asia Pacific, you can write to HP at PDD, PO Box 161, Kitchener Road Post Office, Singapore 912006. Include your product name, and your name, phone number, and postal address.

العربية

تحضير: يجب توصيل كمبيوتر صغيف واحد فقط أم بمقف USB Type-C أو مقف "مفتح" "مفتاح التيار المستمر" (DC OUT) بتمرير الطاقة. خلافه قد يؤدي توصيل جهازي كمبيوتر متتبعين في الشاشنة إلى إتلاف متبغلل النظام وقد يؤدي إتلافه إلى إتلاف الشاشنة وتلف المكونات الداخلية.

تحذير: لتقليل الحد من مخاطر التعرض لصدمة كهربائية أو حوث

تحذير: يجب التأطقة بمأخذ تيار متوافق بسهولة الوصول إليه طوال الوقت. فصل الطاقة عن الشاشنة، بفصل سلك الطاقة عن مأخذ التيار المتأرب. إن لم ترتبط بمقبس توصيل الطاقة عن متصل بسلك الطاقة، فصل الشاشنة عن المأخذ المؤرض (الأرضي) الذي لا يتضمّن ثلاثة سبوس. لا تقم بتسبلل نسخة المؤرض لسلك الطاقة على أيّ من المأخذ. توصيل حبل ذي سبوس نسخة مقبولة بعد من المزمان المصممة لضمان السلامة.

تعليمات: لتقليل خطر الإصابة بالصدمة الكهربائية، اقرأ دليل المستخدم والبرامج والبرامج المتبغلل. لطائفة المعلومات الأمنية والتنظيمية والمتعلقة بالسلامة، يرجى الرجوع إلى إشارات المنتج المرتبطة مع المنتج الخاص بك. إذا تم تقديم ضمانات المحدود في بعض البلدان أو المناطق، لا تقرأ أي الوثيقة أو الناطقة الملصقات التي لا تقرأه فيها الضمان في المود. تسبلل نسخة المقبوس لسلك الطاقة على أيّ من المأخذ. توصيل حبل ذي سبوس نسخة مقبولة. التقليل الوصول إلى شبكة من الضمان على الإنترنت **http://www.hp.com/go/orderdocuments** إلى الموقع الإلكتروني الخاص بالندسة للمنتجات التي تم شرائها في مناطق أسيا-باسيفك على المحيط الهادئ. قراءة مرسلة شركة HP كرسية HP Road Post Office, Singapore 912006 وتذكر في المرالة اسم المنتج الخاص بكمبيوتر ومقرم هاتفك وعنوانات البريد.

Go to **www.hp.com/support** to locate your user guide, drivers, and software. For safety, regulatory, and environmental information, refer to the *Product Notices* provided with your product.

In some countries or regions, HP may provide the HP Limited Warranty in the box. For countries or regions where the warranty is not provided in the box, you can find it on the Web. To access an online copy or order a printed copy of your warranty, go to **http://www.hp.com/go/orderdocuments**. For products purchased in Asia Pacific, you can write to HP at PDD, PO Box 161, Kitchener Road Post Office, Singapore 912006. Include your product name, and your name, phone number, and postal address.

Go to **www.hp.com/support** to locate your user guide, drivers, and software. For safety, regulatory, and environmental information, refer to the *Product Notices* provided with your product.

In some countries or regions, HP may provide the HP Limited Warranty in the box. For countries or regions where the warranty is not provided in the box, you can find it on the Web. To access an online copy or order a printed copy of your warranty, go to **http://www.hp.com/go/orderdocuments**. For products purchased in Asia Pacific, you can write to HP at PDD, PO Box 161, Kitchener Road Post Office, Singapore 912006. Include your product name, and your name, phone number, and postal address.

Go to **www.hp.com/support** to locate your user guide, drivers, and software. For safety, regulatory, and environmental information, refer to the *Product Notices* provided with your product.

In some countries or regions, HP may provide the HP Limited Warranty in the box. For countries or regions where the warranty is not provided in the box, you can find it on the Web. To access an online copy or order a printed copy of your warranty, go to **http://www.hp.com/go/orderdocuments**. For products purchased in Asia Pacific, you can write to HP at PDD, PO Box 161, Kitchener Road Post Office, Singapore 912006. Include your product name, and your name, phone number, and postal address.

Go to **www.hp.com/support** to locate your user guide, drivers, and software. For safety, regulatory, and environmental information, refer to the *Product Notices* provided with your product.

In some countries or regions, HP may provide the HP Limited Warranty in the box. For countries or regions where the warranty is not provided in the box, you can find it on the Web. To access an online copy or order a printed copy of your warranty, go to **http://www.hp.com/go/orderdocuments**. For products purchased in Asia Pacific, you can write to HP at PDD, PO Box 161, Kitchener Road Post Office, Singapore 912006. Include your product name, and your name, phone number, and postal address.

Go to **www.hp.com/support** to locate your user guide, drivers, and software. For safety, regulatory, and environmental information, refer to the *Product Notices* provided with your product.

In some countries or regions, HP may provide the HP Limited Warranty in the box. For countries or regions where the warranty is not provided in the box, you can find it on the Web. To access an online copy or order a printed copy of your warranty, go to **http://www.hp.com/go/orderdocuments**. For products purchased in Asia Pacific, you can write to HP at PDD, PO Box 161, Kitchener Road Post Office, Singapore 912006. Include your product name, and your name, phone number, and postal address.

Go to **www.hp.com/support** to locate your user guide, drivers, and software. For safety, regulatory, and environmental information, refer to the *Product Notices* provided with your product.

In some countries or regions, HP may provide the HP Limited Warranty in the box. For countries or regions where the warranty is not provided in the box, you can find it on the Web. To access an online copy or order a printed copy of your warranty, go to **http://www.hp.com/go/orderdocuments**. For products purchased in Asia Pacific, you can write to HP at PDD, PO Box 161, Kitchener Road Post Office, Singapore 912006. Include your product name, and your name, phone number, and postal address.

Go to **www.hp.com/support** to locate your user guide, drivers, and software. For safety, regulatory, and environmental information, refer to the *Product Notices* provided with your product.

In some countries or regions, HP may provide the HP Limited Warranty in the box. For countries or regions where the warranty is not provided in the box, you can find it on the Web. To access an online copy or order a printed copy of your warranty, go to **http://www.hp.com/go/orderdocuments**. For products purchased in Asia Pacific, you can write to HP at PDD, PO Box 161, Kitchener Road Post Office, Singapore 912006. Include your product name, and your name, phone number, and postal address.

Go to **www.hp.com/support** to locate your user guide, drivers, and software. For safety, regulatory, and environmental information, refer to the *Product Notices* provided with your product.

In some countries or regions, HP may provide the HP Limited Warranty in the box. For countries or regions where the warranty is not provided in the box, you can find it on the Web. To access an online copy or order a printed copy of your warranty, go to **http://www.hp.com/go/orderdocuments**. For products purchased in Asia Pacific, you can write to HP at PDD, PO Box 161, Kitchener Road Post Office, Singapore 912006. Include your product name, and your name, phone number, and postal address.

Go to **www.hp.com/support** to locate your user guide, drivers, and software. For safety, regulatory, and environmental information, refer to the *Product Notices* provided with your product.

In some countries or regions, HP may provide the HP Limited Warranty in the box. For countries or regions where the warranty is not provided in the box, you can find it on the Web. To access an online copy or order a printed copy of your warranty, go to **http://www.hp.com/go/orderdocuments**. For products purchased in Asia Pacific, you can write to HP at PDD, PO Box 161, Kitchener Road Post Office, Singapore 912006. Include your product name, and your name, phone number, and postal address.

Go to **www.hp.com/support** to locate your user guide, drivers, and software. For safety, regulatory, and environmental information, refer to the *Product Notices* provided with your product.

In some countries or regions, HP may provide the HP Limited Warranty in the box. For countries or regions where the warranty is not provided in the box, you can find it on the Web. To access an online copy or order a printed copy of your warranty, go to **http://www.hp.com/go/orderdocuments**. For products purchased in Asia Pacific, you can write to HP at PDD, PO Box 161, Kitchener Road Post Office, Singapore 912006. Include your product name, and your name, phone number, and postal address.

Go to **www.hp.com/support** to locate your user guide, drivers, and software. For safety, regulatory, and environmental information, refer to the *Product Notices* provided with your product.

In some countries or regions, HP may provide the HP Limited Warranty in the box. For countries or regions where the warranty is not provided in the box, you can find it on the Web. To access an online copy or order a printed copy of your warranty, go to **http://www.hp.com/go/orderdocuments**. For products purchased in Asia Pacific, you can write to HP at PDD, PO Box 161, Kitchener Road Post Office, Singapore 912006. Include your product name, and your name, phone number, and postal address.

Go to **www.hp.com/support** to locate your user guide, drivers, and software. For safety, regulatory, and environmental information, refer to the *Product Notices* provided with your product.

In some countries or regions, HP may provide the HP Limited Warranty in the box. For countries or regions where the warranty is not provided in the box, you can find it on the Web. To access an online copy or order a printed copy of your warranty, go to **http://www.hp.com/go/orderdocuments**. For products purchased in Asia Pacific, you can write to HP at PDD, PO Box 161, Kitchener Road Post Office, Singapore 912006. Include your product name, and your name, phone number, and postal address.

Dansk

ADVARSEL: Kun én værtscomputer må være sluttet til enten USB-porten Type-C eller strømudgangsporten til jævrstrøm for system. Tilslutning af værtscomputer til skærmen kan medføre nedlukning af systemet, afbrydelse af strøm og behov for at slukke og genstarte skærmen.

ADVARSEL: Følg nedenstående fremgangsåråde for at mindske risikoen for elektrisk stød eller beskadigelse af udstyret:

- Slut nedledningen til en stikkontakt med vekselstrøm, der altid er let tilgængelig.
- Slut af tilførelsen til monitoren en debranchant le cordon d'alimentation de la prise secteur.
- Hvis nedledningen er forsynet med et 3-bens stik, skal du sætte ledningen i en 3-bens stikkontakt med jordforbindelse. Undgå at gøre nedledningen Jordstikket ikke-brugbart ved f.eks. at sætte en 2-bens adapter i Jordstikket er en vigtig sikkerhedsfunktion.

Gå til **www.hp.com/support** for at finde din brugervejledning, drivere og software. For sikkerhedsoplysninger, lovgivningsmæssige oplysninger og oplysninger om miljø se *Produktunderretninger*, som fulgte med dit produkt.

For nogle lande eller områder vedkommende kan der være vedlagte en trykt begrænset HP-granti fra HP i kassen. I de lande eller områder, hvor garantien ikke følger med i trykt format i kassen, kan du finde en kopi på nettet. For at få vist en onlinekopi eller bestille et trykt eksemplar af din garanti kan du gå til **http://www.hp.com/go/orderdocuments**. Hvis produktet er købt i Asien/Stillehavsområdet, kan du skrive til HP, PDD, PO Box 161, Kitchener Road Post Office, Singapore 912006. Angiv produktnavnet samt dit navn, telefonnummer og postadresse.

Go to **www.hp.com/support** to locate your user guide, drivers, and software. For safety, regulatory, and environmental information, refer to the *Product Notices* provided with your product.

In some countries or regions, HP may provide the HP Limited Warranty in the box. For countries or regions where the warranty is not provided in the box, you can find it on the Web. To access an online copy or order a printed copy of your warranty, go to **http://www.hp.com/go/orderdocuments**. For products purchased in Asia Pacific, you can write to HP at PDD, PO Box 161, Kitchener Road Post Office, Singapore 912006. Include your product name, and your name, phone number, and postal address.

Go to **www.hp.com/support** to locate your user guide, drivers, and software. For safety, regulatory, and environmental information, refer to the *Product Notices* provided with your product.

In some countries or regions, HP may provide the HP Limited Warranty in the box. For countries or regions where the warranty is not provided in the box, you can find it on the Web. To access an online copy or order a printed copy of your warranty, go to **http://www.hp.com/go/orderdocuments**. For products purchased in Asia Pacific, you can write to HP at PDD, PO Box 161, Kitchener Road Post Office, Singapore 912006. Include your product name, and your name, phone number, and postal address.

Go to **www.hp.com/support** to locate your user guide, drivers, and software. For safety, regulatory, and environmental information, refer to the *Product Notices* provided with your product.

In some countries or regions, HP may provide the HP Limited Warranty in the box. For countries or regions where the warranty is not provided in the box, you can find it on the Web. To access an online copy or order a printed copy of your warranty, go to **http://www.hp.com/go/orderdocuments**. For products purchased in Asia Pacific, you can write to HP at PDD, PO Box 161, Kitchener Road Post Office, Singapore 912006. Include your product name, and your name, phone number, and postal address.

Go to **www.hp.com/support** to locate your user guide, drivers, and software. For safety, regulatory, and environmental information, refer to the *Product Notices* provided with your product.

In some countries or regions, HP may provide the HP Limited Warranty in the box. For countries or regions where the warranty is not provided in the box, you can find it on the Web. To access an online copy or order a printed copy of your warranty, go to **http://www.hp.com/go/orderdocuments**. For products purchased in Asia Pacific, you can write to HP at PDD, PO Box 161, Kitchener Road Post Office, Singapore 912006. Include your product name, and your name, phone number, and postal address.

Bahasa Indonesia

PERINGATAN: Hanya satu PC host yang boleh tersambung ke port USB Type-C atau satu KUALIFIKASI port untuk melewati daya. Menyambungkan dua PC host ke monitor akan menyebabkan sistem mati, daya hilang, dan keharusan memmatikan dan menyalakan ulang monitor.

PERINGATAN: Untuk mengurangi risiko sengatan listrik atau kerusakan perangkat:

- Tancapkan kabel daya ke stikontak AC yang mudah diakses setiap saat.
- Tancapkan daya listrik dari monitor dengan mencabut kabel daya dari stikontak AC.
- Jika kabel daya dilampirkan ke monitor tambahan 3 pin, hubungkan kabel tersebut ke stikontak 3 pin yang diarde (dibumikan). Jangan menofungsikan pin arde kabel daya, misalnya dengan memasang adaptor 2 pin. Pin arde merupakan alat penganan yang penting.

Kunjungi **www.hp.com/support** untuk menemukan panduan pengguna, drive, dan perangkat lunak Anda. Untuk informasi keselamatan, peraturan dan lingkungan, lihat *Informasi Produk* yang disediakan bersama produk Anda.

Di beberapa negara atau wilayah, HP mungkin menyediakan Jaminan Terbatas HP di dalam kotak kemasan. Untuk negara atau wilayah yang tidak menyediakan jaminan di dalam kotak kemasan, Anda dapat mempelajari di Web. Untuk mengakses salinan online atau memesan salinan cetak jaminan Anda, kunjungi **http://www.hp.com/go/orderdocuments**. Untuk produk-purchas di Asia Pasifik, Anda dapat menulis ke HP di PDD, PO Box 161, Kitchener Road Post Office, Singapore 912006. Sertakan nama produk, data nama, nomor, serta alamat Anda.

Български

ПРЕДУПРЕЖДЕНИЕ: Само един хост компютър трябва да бъде свързан към USB Type-C или DC OUT порт, за да може захранването да протече. Свързването на два хоста може да доведе до изключване на системата, загуба на мощност и необходимост от изключване или рестартиране на монитора.

ПРЕДУПРЕЖДЕНИЕ: За да намалите риска от електрически удар или повреда на оборудването:

- Включвайте захранващия кабел към електрически контакт, който е лесно достъпен по всяко време.
- Изключвайте монитора от електрозахранването чрез изваждане на захранващия кабел от електрически контакт.
- Ако към захранващия кабел е предоставен предпазен 3-шрифт, включвайте кабела към заземления контакт с 3-шрифта. Не деактивирайте шрифта за заземление на захранващия кабел, например чрез използване на адаптер с 2 шрифта. Шрифтът за заземление е важен фактор за гарантиране на безопасността.

Отидете на **www.hp.com/support**, за да изтеглите ръководството за потребител, драйвери и софтуер. За информация, свързана с безопасността, нормативните разпоредби и околната среда, вижте *Декларациите за продукт*, предоставени с вашия продукт.

Възможно е в някои държави или региони HP да предоставя ограничена гаранция на HP в кутията. В държави или региони, където в кутията не е предоставена гаранция, можете да я намерите в интернет. За достъп до онлайн копие или заявка на отпечатано копие на вашата гаранция отидете на **http://www.hp.com/go/orderdocuments**. За продукти, закупени в Азиатско-тихоокеанския регион, можете да пишете на HP на адрес PDD, PO Box 161, Kitchener Road Post Office, Singapore 912006. Посочете име на продукта, своето име, телефонен номер и адрес за кореспонденция.

Česky

VAROVÁNÍ: Pro přechod napájení je třeba k portu USB Type-C nebo výstupnímu portu stejnosměrného napájení připojit pouze jeden hosteský počítač. Připojení dvou hosteských počítačů k monitoru by mohlo způsobit vypnutí systému, ztrátu napájení a potřebu vypnutí a restartovat monitor.

VAROVÁNÍ: Pro snížení rizika úrazu elektrickým proudem nebo poškození zařízení:

- Napájecí kabel zapojte do zásuvky střídaného proudu, která je za každé situace snadno dostupná.
- Monitor odpojte od zdroje napájení tak, že vytáhnete napájecí kabel ze zásuvky střídaného proudu.
- Pokud je na napájecím kabelu tříkolíková zástrčka, připojte ji k uzemněné tříkolíkové zásuvce. Funkci zemnění kolíku napájecího kabelu nevykládejte – například připojením dvoukolíkové adaptéru. Zemění kolík při důležitou bezpečnostní funkci.

Přejděte na stránku **www.hp.com/support**, na které vyhledáte uživatelskou příručku, ovladače a software. Informace o bezpečnosti, směrnicích a životním prostředí naleznete v dokumentu *Důležité informace o produktu* dodaném s produktem.

V některých zemích nebo oblastech může společnost HP spolu s balením poskytovat omezenou záruku HP. V zemích nebo oblastech, kde není záruka dodávána spolu s balením, ji najdete na webu. Pokud chcete online nebo objednat tištěnou verzi, přejděte na stránku **http://www.hp.com/go/orderdocuments**. U produktů zakoupených v Asii a Tichomoří můžete napsat společnost HP na adresu PDD, PO Box 161, Kitchener Road Post Office, Singapore 912006. Uveďte název produktu, jméno, telefonní číslo a poštovní adresu.

Go to **www.hp.com/support** to locate your user guide, drivers, and software. For safety, regulatory, and environmental information, refer to the *Product Notices* provided with your product.

In some countries or regions, HP may provide the HP Limited Warranty in the box. For countries or regions where the warranty is not provided in the box, you can find it on the Web. To access an online copy or order a printed copy of your warranty, go to **http://www.hp.com/go/orderdocuments**. For products purchased in Asia Pacific, you can write to HP at PDD, PO Box 161, Kitchener Road Post Office, Singapore 912006. Include your product name, and your name, phone number, and postal address.

Go to **www.hp.com/support** to locate your user guide, drivers, and software. For safety, regulatory, and environmental information, refer to the *Product Notices* provided with your product.

In some countries or regions, HP may provide the HP Limited Warranty in the box. For countries or regions where the warranty is not provided in the box, you can find it on the Web. To access an online copy or order a printed copy of your warranty, go to **http://www.hp.com/go/orderdocuments**. For products purchased in Asia Pacific, you can write to HP at PDD, PO Box 161, Kitchener Road Post Office, Singapore 912006. Include your product name, and your name, phone number, and postal address.

Go to **www.hp.com/support** to locate your user guide, drivers, and software. For safety, regulatory, and environmental information, refer to the *Product Notices* provided with your product.

In some countries or regions, HP may provide the HP Limited Warranty in the box. For countries or regions where the warranty is not provided in the box, you can find it on the Web. To access an online copy or order a printed copy of your warranty, go to **http://www.hp.com/go/orderdocuments**. For products purchased in Asia Pacific, you can write to HP at PDD, PO Box 161, Kitchener Road Post Office, Singapore 912006. Include your product name, and your name, phone number, and postal address.

Go to **www.hp.com/support** to locate your user guide, drivers, and software. For safety, regulatory, and environmental information, refer to the *Product Notices* provided with your product.

In some countries or regions, HP may provide the HP Limited Warranty in the box. For countries or regions where the warranty is not provided in the box, you can find it on the Web. To access an online copy or order a printed copy of your warranty, go to **http://www.hp.com/go/orderdocuments**. For products purchased in Asia Pacific, you can write to HP at PDD, PO Box 161, Kitchener Road Post Office, Singapore 912006. Include your product name, and your name, phone number, and postal address.

Go to **www.hp.com/support** to locate your user guide, drivers, and software. For safety, regulatory, and environmental information, refer to the *Product Notices* provided with your product.

In some countries or regions, HP may provide the HP Limited Warranty in the box. For countries or regions where the warranty is not provided in the box, you can find it on the Web. To access an online copy or order a printed copy of your warranty, go to **http://www.hp.com/go/orderdocuments**. For products purchased in Asia Pacific, you can write to HP at PDD, PO Box 161, Kitchener Road Post Office, Singapore 912006. Include your product name, and your name, phone number, and postal address.

Français

AVERTISSEMENT: Un seul PC hôte doit être connecté au port USB Type-C ou de la SORTIE CC pour assurer le passage de l'alimentation. Le connexion de deux PC hôtes au moniteur peut entraîner l'arrêt du système, la perte de puissance, et la nécessité d'éteindre et de redémarrer le moniteur.

AVERTISSEMENT: Pour réduire les risques de choc électrique ou de détérioration du matériel :

- Branchez le cordon d'alimentation sur une prise secteur facilement accessible à tout moment.
- Débranchez l'alimentation du moniteur en débranchant le cordon d'alimentation de la prise secteur.
- Si l'ordinateur est fourni avec une fiche de branchement tripolaire, branchez le cordon sur une prise électrique tripolaire mise à la terre. Ne désactivez pas la broche de mise à la terre du cordon d'alimentation en utilisant, par exemple, un adaptateur bipolaire. La broche de mise à la terre constitue un élément de sécurité essentiel.

Rendez-vous sur **www.hp.com/support** pour accéder au manuel de l'utilisateur, aux pilotes et aux logiciels. Pour obtenir des informations sur la sécurité, les réglementations et les conditions d'utilisation, reportez-vous au document *Informations sur le produit* fourni avec votre produit.

Dans certains pays ou certaines régions, HP peut fournir la garantie limitée HP pour le produit. Dans les pays ou régions où la garantie n'est pas fournie pour le produit, vous pouvez la consulter sur le site Web. Pour consulter une copie en ligne ou demander une version imprimée de votre garantie, rendez-vous sur **http://www.hp.com/go/orderdocuments**. Pour les produits achetés en Asie-Pacifique, vous pouvez écrire à HP à l'adresse suivante : PDD, PO Box 161, Kitchener Road Post Office, Singapore 912006. Veuillez inclure le nom de votre produit, votre nom, votre numéro de téléphone et votre adresse postale.

Rendez-vous sur **www.hp.com/support** pour accéder au manuel de l'utilisateur, aux pilotes et aux logiciels. Pour obtenir des informations sur la sécurité, les réglementations et les conditions d'utilisation, reportez-vous au document *Informations sur le produit* fourni avec votre produit.

Dans certains pays ou certaines régions, HP peut fournir la garantie limitée HP pour le produit. Dans les pays ou régions où la garantie n'est pas fournie pour le produit, vous pouvez la consulter sur le site Web. Pour consulter une copie en ligne ou demander une version imprimée de votre garantie, rendez-vous sur **http://www.hp.com/go/orderdocuments**. Pour les produits achetés en Asie-Pacifique, vous pouvez écrire à HP à l'adresse suivante : PDD, PO Box 161, Kitchener Road Post Office, Singapore 912006. Veuillez inclure le nom de votre produit, votre nom, votre numéro de téléphone et votre adresse postale.

Go to **www.hp.com/support** to locate your user guide, drivers, and software. For safety, regulatory, and environmental information, refer to the *Product Notices* provided with your product.

In some countries or regions, HP may provide the HP Limited Warranty in the box. For countries or regions where the warranty is not provided in the box, you can find it on the Web. To access an online copy or order a printed copy of your warranty, go to **http://www.hp.com/go/orderdocuments**. For products purchased in Asia Pacific, you can write to HP at PDD, PO Box 161, Kitchener Road Post Office, Singapore 912006. Include your product name, and your name, phone number, and postal address.

Go to **www.hp.com/support** to locate your user guide, drivers, and software. For safety, regulatory, and environmental information, refer to the *Product Notices* provided with your product.

In some countries or regions, HP may provide the HP Limited Warranty in the box. For countries or regions where the warranty is not provided in the box, you can find it on the Web. To access an online copy or order a printed copy of your warranty, go to **http://www.hp.com/go/orderdocuments**. For products purchased in Asia Pacific, you can write to HP at PDD, PO Box 161, Kitchener Road Post Office, Singapore 912006. Include your product name, and your name, phone number, and postal address.

Go to **www.hp.com/support** to locate your user guide, drivers, and software. For safety, regulatory, and environmental information, refer to the *Product Notices* provided with your product.

In some countries or regions, HP may provide the HP Limited Warranty in the box. For countries or regions where the warranty is not provided in the box, you can find it on the Web. To access an online copy or order a printed copy of your warranty, go to **http://www.hp.com/go/orderdocuments**. For products purchased in Asia Pacific, you can write to HP at PDD, PO Box 161, Kitchener Road Post Office, Singapore 912006. Include your product name, and your name, phone number, and postal address.

Go to **www.hp.com/support** to locate your user guide, drivers, and software. For safety, regulatory, and environmental information, refer to the *Product Notices* provided with your product.

In some countries or regions, HP may provide the HP Limited Warranty in the box. For countries or regions where the warranty is not provided in the box, you can find it on the Web. To access an online copy or order a printed copy of your warranty, go to **http://www.hp.com/go/orderdocuments**. For products purchased in Asia Pacific, you can write to HP at PDD, PO Box 161, Kitchener Road Post Office, Singapore 912006. Include your product name, and your name, phone number, and postal address.

Go to **www.hp.com/support** to locate your user guide, drivers, and software. For safety, regulatory, and environmental information, refer to the *Product Notices* provided with your product.

In some countries or regions, HP may provide the HP Limited Warranty in the box. For countries or regions where the warranty is not provided in the box, you can find it on the Web. To access an online copy or order a printed copy of your warranty, go to **http://www.hp.com/go/orderdocuments**. For products purchased in Asia Pacific, you can write to HP at PDD, PO Box 161, Kitchener Road Post Office, Singapore 912006. Include your product name, and your name, phone number, and postal address.

Go to **www.hp.com/support** to locate your user guide, drivers, and software. For safety, regulatory, and environmental information, refer to the *Product Notices* provided with your product.

In some countries or regions, HP may provide the HP Limited Warranty in the box. For countries or regions where the warranty is not provided in the box, you can find it on the Web. To access an online copy or order a printed copy of your warranty, go to **http://www.hp.com/go/orderdocuments**. For products purchased in Asia Pacific, you can write to HP at PDD, PO Box 161, Kitchener Road Post Office, Singapore 912006. Include your product name, and your name, phone number, and postal address.

Go to **www.hp.com/support** to locate your user guide, drivers, and software. For safety, regulatory, and environmental information, refer to the *Product Notices* provided with your product.

In some countries or regions, HP may provide the HP Limited Warranty in the box. For countries or regions where the warranty is not provided in the box, you can find it on the Web. To access an online copy or order a printed copy of your warranty, go to **http://www.hp.com/go/orderdocuments**. For products purchased in Asia Pacific, you can write to HP at PDD, PO Box 161, Kitchener Road Post Office, Singapore 912006. Include your product name, and your name, phone number, and postal address.

Go to **www.hp.com/support** to locate your user guide, drivers, and software. For safety, regulatory, and environmental information, refer to the *Product Notices* provided with your product.

In some countries or regions, HP may provide the HP Limited Warranty in the box. For countries or regions where the warranty is not provided in the box, you can find it on the Web. To access an online copy or order a printed copy of your warranty, go to **http://www.hp.com/go/orderdocuments**. For products purchased in Asia Pacific, you can write to HP at PDD, PO Box 161, Kitchener Road Post Office, Singapore 912006. Include your product name, and your name, phone number, and postal address.

Go to **www.hp.com/support** to locate your user guide, drivers, and software. For safety, regulatory, and environmental information, refer to the *Product Notices* provided with your product.

In some countries or regions, HP may provide the HP Limited Warranty in the box. For countries or regions where the warranty is not provided in the box, you can find it on the Web. To access an online copy or order a printed copy of your warranty, go to **http://www.hp.com/go/orderdocuments**. For products purchased in Asia Pacific, you can write to HP at PDD, PO Box 161, Kitchener Road Post Office, Singapore 912006. Include your product name, and your name, phone number, and postal address.

Go to **www.hp.com/support** to locate your user guide, drivers, and software. For safety, regulatory, and environmental information, refer to the *Product Notices* provided with your product.

In some countries or regions, HP may provide the HP Limited Warranty in the box. For countries or regions where the warranty is not provided in the box, you can find it on the Web. To access an online copy or order a printed copy of your warranty, go to **http://www.hp.com/go/orderdocuments**. For products purchased in Asia Pacific, you can write to HP at PDD, PO Box 161, Kitchener Road Post Office, Singapore 912006. Include your product name, and your name, phone number, and postal address.

Go to <