

▶ 55VH7B

55" Class (54.6" diagonal)



With its borderless design, the VH7B series offers maximum immersion for video walls. Engineered with efficient management tools such as quad-core System on Chip (SoC) which plays various types of content without the need for an external media player. The VH7B is perfect to effectively raise a customer's awareness, particularly in areas with heavy foot traffic such as museums, galleries, and large retail stores.

KEY FEATURES

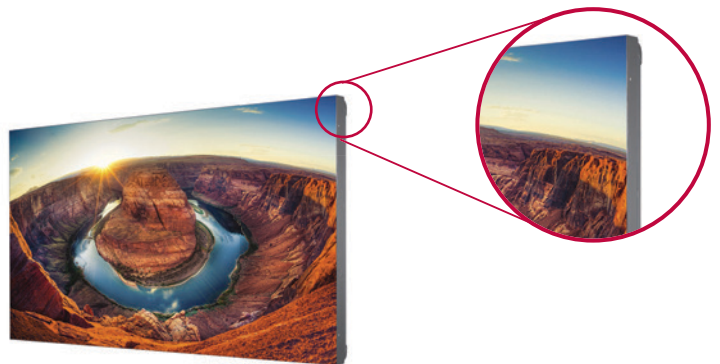
Borderless Design



NARROWEST BEZEL

Borderless design with its 0.9mm even panel bezel* enables immersive and seamless viewing experiences on assembled video wall screens.

* Panel Bezel : The black matrix section where an image is not displayed on the front panel.



Smart Platform



BUILT-IN SoC AND SYNCED PLAYBACK

The optimized built-in quad-core SoC in the VH7B can play various content formats and eliminates the need for an external media player. Using its built-in SoC, each display plays its video tile without lag for synchronized content playback.



- CPU**
1.2GHz Quad Core CPU
- Memory**
2.5GB double data 3 (DDR3) 32bit memory
- GPU**
550MHz video processor with full codec (WMV, MP4, HEVC, VP9, and H.264 capabilities)
- Internal Memory**
A storage of 8GB (4GB is occupied by system)

webOS 2.0

The webOS 2.0 platform provides easy and convenient tools to create contents. LG's Software Development Kit (SDK) and technical supports make content development and management easier.

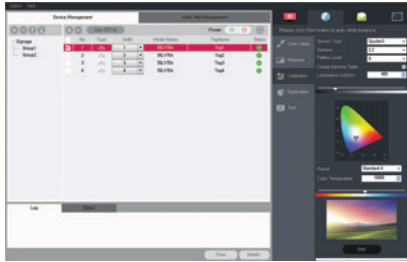


<http://developer.lge.com/webOSSignage>

Software

ADVANCED COLOR ADJUSTMENT

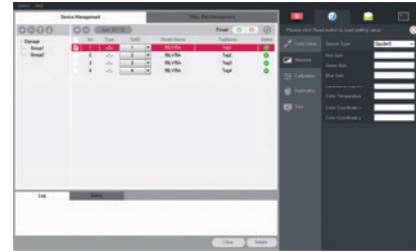
- Intuitive GUI in SuperSign C software allows measurement, color adjustment and brightness instantly on display
- Automatic white balancing of a videowall display when using a sensor



SuperSign C

REMOTE MONITORING AND CONTROL

Intuitive GUI-based Remote Monitoring & Control via the networks and RS232 connection feature in SuperSign C software.

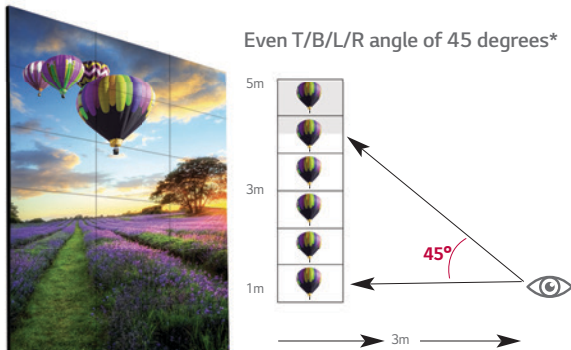


SuperSign C

Superior Picture Quality

CLEAR VIEWING ANGLE

The VH7B ensures clear picture quality even when installed in stacks of more than four. This is very favorable for the quantity of video walls installed in large spaces.



*The angle from the center of the screen to have 50% of the initial luminance.

UNIFORM BRIGHTNESS

LG's LED backlight technology guarantees high uniformity in brightness to ensure a clear picture. On other screens, certain spots may appear darker than others, but the new VH7B generates high visibility and a consistent brightness across the whole screen.



Conventional (80%)

VH7B (90%)

IMAGE GAP REDUCTION

The VH7B includes an image improvement algorithm that can adjust to objects located in the boundary of bezel for a seamless viewing experience.

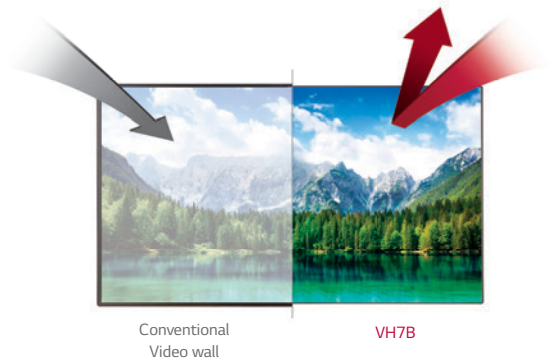


Conventional

VH7B

SHINE OUT

The VH7B is the perfect fit for window displays because it reflects sunlight for better visibility and a clearer image than conventional panels.



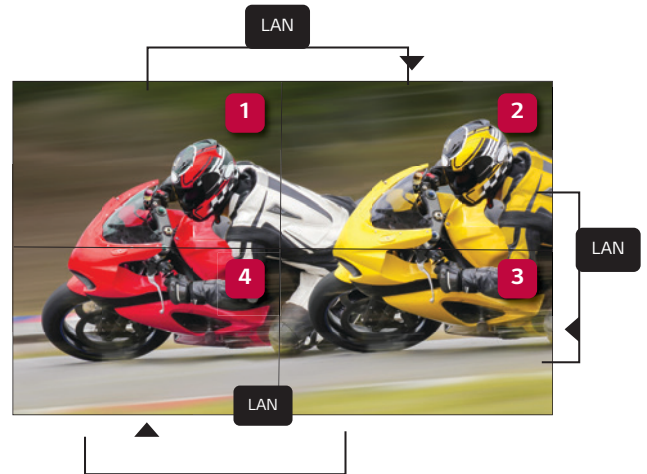
Conventional Video wall

VH7B

Enhanced Content Management

LAN DAISY CHAIN PERFORMANCE

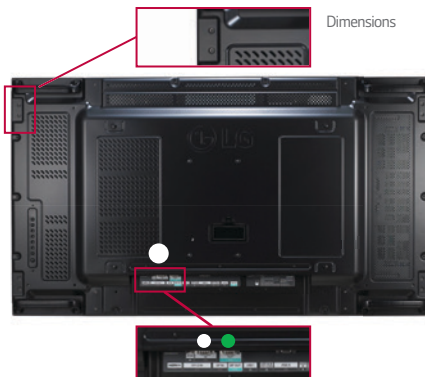
A LAN daisy chain allows you to execute commands to control and monitor the screens and even update their firmware.



Convenient Options

GUIDE BRACKET / CLASSIFIED PORT

A guide bracket is an attachment that ensures the video wall remains flat. The classified in/out port prevents errors when connecting a daisy chain.



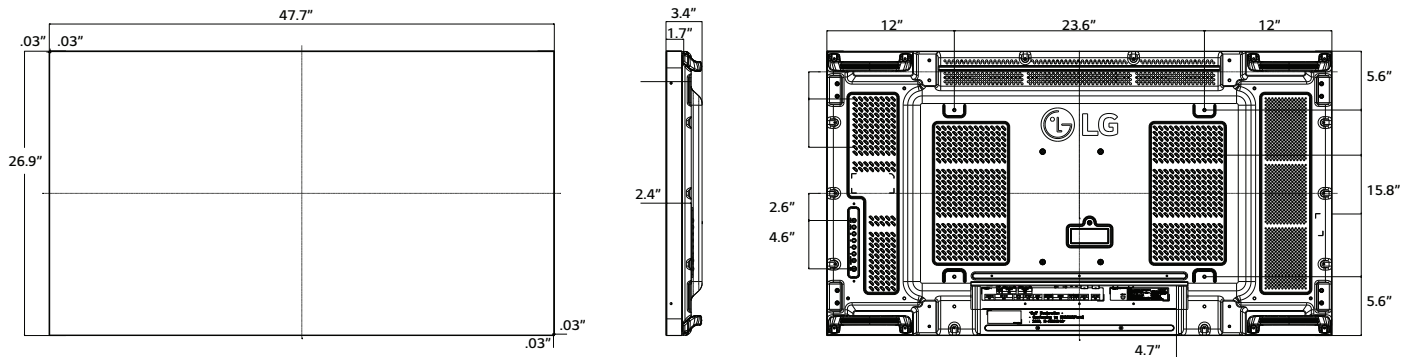
Guide Bracket
Classified In/Out Port
• Input : White
• Output : Green

CONTROL BUTTONS

With 8 control buttons, it's easy to operate various functions of the VH7B, such as controlling the OSD (On Screen Display) and changing the input source.



Dimensions



Rear Jack Panel

- ① IR IN
- ② RS-232C IN
- ③ RS-232C OUT
- ④ HDMI IN
- ⑤ DVI-D IN
- ⑥ DP IN
- ⑦ DP OUT
- ⑧ USB 2.0 IN
- ⑨ USB 3.0 IN
- ⑩ RGB/COMPONENT/AV IN
- ⑪ AUDIO IN
- ⑫ AUDIO OUT
- ⑬ LAN IN
- ⑭ LAN OUT

