

Seiko Instruments Smart Label Printers



Seiko Instruments USA Inc.

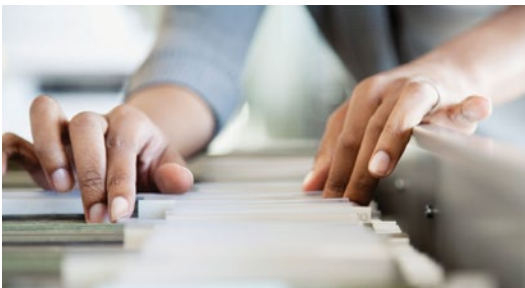


SLP 600 Series

The faster, easier, more affordable way to get you organized.

Smart Label Printers

- Faster
- Easier
- Cheaper
- More versatile



Printing labels from your PC or Mac is frustrating. Sure, you can buy sheets of labels for your laser or inkjet printer. But what if you need only one label? What if you don't have the time to fuss with confusing template files trying to get labels to look right? What if address labels aren't enough?



Smart Label Printers are designed to print labels, and they do it incredibly well. Need a single label? Print. Need twenty labels? Print. Need different types of labels? Print, swap, and print again. Need it fast? Print. It's that simple.



No special sheets of labels. No awkward templates. No need for ink, toner or ribbons. Smart Label Printers give you fast, straightforward and predictable label printing. Time, after time, after time.

Use a Smart Label Printer to:

- Get your invoices out faster
- Take the headaches out of shipping products
- Eliminate holiday mailing nightmares
- Get systematic with color-coded file folders
- Print professional looking name and security badges
- Organize those old CDs, DVDs, binders, and more

SLP 600 Series

Seiko Instruments' SLP 600 series label printers bring industry-leading direct thermal printing technology from the world-leader in precision manufacturing to your desktop. Whether you need address labels, shipping labels with bar codes, color-coded file folder labels, or any number of other label printing uses, the SLP 600 series gives you a faster, easier, and more affordable way to get organized.

With plug and play simplicity, Seiko Instruments label printers are quick to setup and easy to use. Advanced direct thermal printer technology means fast — up to almost 4 inches per second — high-quality label printing without the fuss of ink cartridges, toner or ribbons. The only consumable these printers use is labels. Replacing rolls and changing labels could not be easier. Simply drop in a new roll and you are ready. The SLP 600 series features three affordable printers, giving you an array of print speed, print resolution, and communication interface options to choose from.



Smart Label Printer 620

An affordable, entry-level desktop USB model, featuring Seiko Instruments' ultra-reliable direct thermal printer technology. The SLP 620 is perfect for everyday label printing needs.



Smart Label Printer 650

More speed. Higher resolution. A USB direct thermal printer producing 300 DPI labels at close to 4 inches per second.



Smart Label Printer 650SE

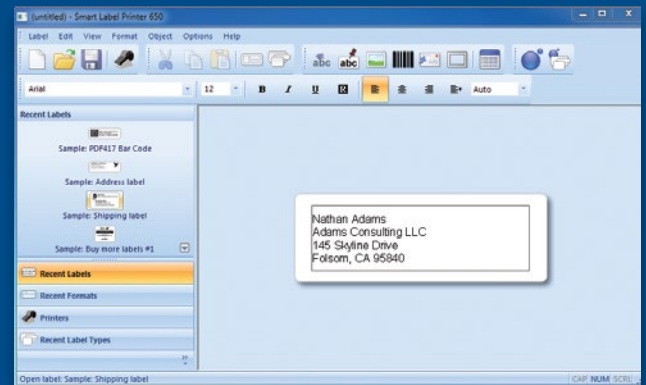
Greater adaptability. A direct thermal printer featuring USB and serial connectivity. The SLP 650SE produces 300 DPI labels at close to 4 inches per second.

Smart Label Software

Rapidly produce professional labels on your PC or Mac, running Windows, Mac OS, or Linux. Intuitive Smart Label Software supports Microsoft® Excel®, Outlook®, Access®, and Word®, and gives you an easy-to-use interface for creating, formatting, printing, and saving all your labels.

Need to design your own labels? No problem.

Smart Label Printer software gives you the tools to create great looking labels. Specify where to place text, graphics, or bar codes. Use your own images by importing from existing desktop files or use copy and paste to import images from your computer's clipboard. For fast, personalized name tag labels, Smart Label Printer software imports images captured directly from your computer's camera.



Labels

Seiko Instruments SLP 600 series label printers support a wide variety of label stock. For best results, use only labels designed for the SLP 600 series by Seiko Instruments. Popular labels include:

- Address labels: clear, white, and assorted colors for all your mailing needs.
- Shipping labels: with plenty of options, including clear, opaque, removable, and bulk rolls.
- File folder labels: multiple sizes and assorted colors to get you organized.
- Multipurpose labels: choose from clear, opaque, removable, large-sized, “toughie”, and bulk rolls.
- Name badge and security labels that expire the next day.
- Custom labels: If you need a lot of labels in a custom format, just give us a call.

For more details and a complete list of available products, visit www.siiprinters.com.

Supported Software

Seiko Instruments SLP 600 series label printers support Microsoft® Excel®, Access®, Word®, and Outlook®.

What's in the box?

All Seiko Instruments SLP 600 series printers include the following components:

- Smart Label Printer (SLP 620, SLP 650 or SLP 650SE)
- Quick Start Guide
- CD-ROM containing software and printer drivers
- USB cable
- Serial cable (SLP 650SE only)
- AC adapter
- Roll of Smart Labels

Seiko Instruments USA Inc.

21221 S. Western Avenue, Suite 250
Torrance, CA 90501
(800) 688-0817 (product inquiries)
(310) 517-7778 (corporate contact)
www.siiprinters.com



Technical Specifications

| Specification | SLP620 | SLP650 & SLP650SE |
|-------------------------------|---|---------------------------------------|
| Printing Technology | Direct Thermal | |
| Resolution | 203 DPI (8 dots/mm) | 300 DPI (11.81 dots/mm) |
| Max. Paper Width | 2.28 in. (57.9 mm) | |
| Max. Printing Speed | 2.76 inches/second (70 mm/second) | 3.94 inches/second (100 mm/second) |
| Interface | USB | 650 USB 650SE USB, RS-232C |
| Operating Voltage | DC5.7 V to DC6.3 V | DC11.4 V to DC12.6 V |
| Current Consumption (Normal) | 2.3 A | 2.8 A |
| Current Consumption (Maximum) | 2.5 A | 3.0 A |
| Dimensions | 4.48 in. (W) x 6.77 in. (D) x 5.83 in. (H) 113.8mm (W) x 172.0 mm (D) x 148.0 mm (H) | |
| Weight | Approx. 1.08 lbs. (490 g) | |
| Life Span | 6 km | 15 km |

How to buy

Buy Seiko Instruments Smart Label Printers through the Seiko Instruments USA website, www.siiprinters.com, or by calling toll free (800) 688-0817. Or, check your favorite online retailer for Seiko Instruments Smart Label Printer products.