



arlo®

Wire-Free Camera  
Quick Start Guide

# What's in the box



100% wireless  
camera



Lithium 123  
batteries



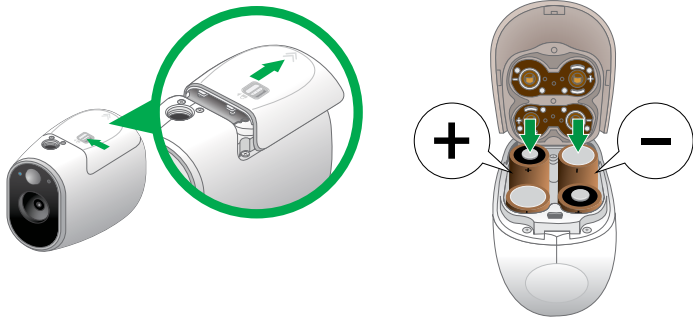
Magnetic wall  
mount



Mounting  
screw

# Insert the batteries

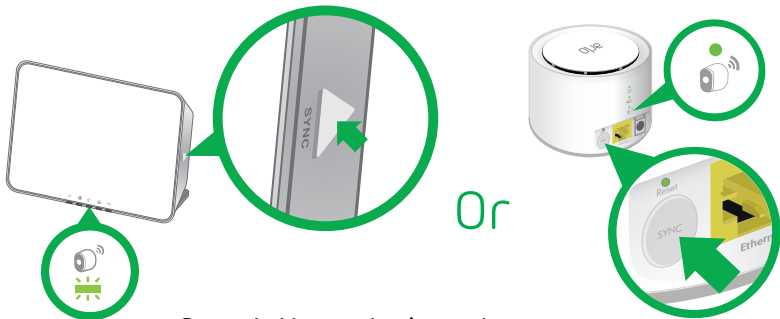
1. Slide the battery door back and lift it.
2. Insert the batteries and close the battery door.



# Sync your camera with a base station

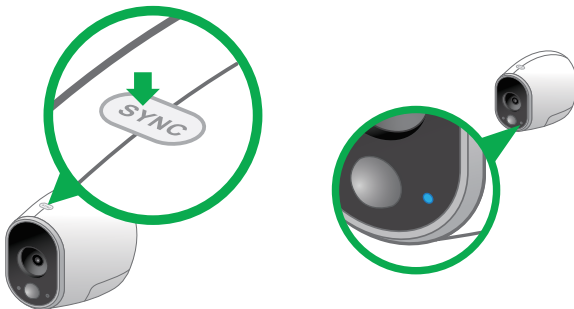
Sync cameras one at a time.

1. Place the camera within one to three feet of the base station.
2. Press the **Sync** button on the base station for two seconds.  
The base station sync status LED blinks green



Base station varies by region.

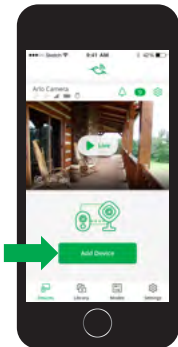
3. Press the **Sync** button on the camera for two seconds.  
The camera LED blinks blue slowly and then blinks fast when the sync is finished.



**Note:** If the LED blinks amber, the sync wasn't successful. Repeat the sync process.

# Add the camera to your Arlo account

1. Open the Arlo app on your smartphone, log in, and tap **Add Device**.  
If you're using a computer, visit <https://my.arlo.com/#/login>.
2. Follow the onscreen instructions.



# You're done!

Your Arlo camera is set up and ready to go.


To view useful tutorial videos, find troubleshooting tips, or get support, scan the QR code or navigate in your browser to [www.arlo.com/support](http://www.arlo.com/support).



©2018 Arlo Technologies, Inc. Arlo, Arlo logo, and Every Angle Covered are trademarks of Arlo Technologies, Inc. Other trademarks are for reference purposes only.

## Compliance

For regulatory compliance information including the EU Declaration of Conformity, visit [www.arlo.com/about/regulatory/](http://www.arlo.com/about/regulatory/).

 Arlo International, Ltd.  
Floor 3, Building 3 University Technology Center  
Curraheen Road, Cork, Ireland



Arlo Technologies, Inc.  
2200 Faraday Ave. Suite 150  
Carlsbad, CA 92008 USA

[www.arlo.com](http://www.arlo.com)

[www.arlo.com/support](http://www.arlo.com/support)

November 2018



201-19465-05